



PRINCE GEORGE'S
COMMUNITY COLLEGE

DATE: November 13, 2024

TO: All Prospective Proposers

FROM: Adrienne Smith

Procurement Coordinator, Office of Procurement and Contracting
301-546-0015

RE: **Addendum 1 to RFP 25-02, Main Campus Dining Services**

The following amends the above referenced RFP documents. Receipt of this addendum one is to be acknowledged by completing the enclosed "Acknowledgement of Receipt of Addenda Form" and including it in the proposal. The Solicitation Schedule is subject to further change modification, as required by the College.

1. Questions and Responses.

Attached to this Addendum 1 is the Questions and Response Log. The Questions and Response Log contains all of the questions received. The last day for questions was November 6, 2024 at 10:00 AM EST

All proposals are now due November 20, 2024 by 10:00 AM EST

End of Addendum 1 dated 11-13-24

ACKNOWLEDGEMENT OF RECEIPT OF ADDENDA FORM

RFP NO.: RFP 25-02

PROPOSAL DUE DATE: November 20, 2024 by 10:00 AM EST

RFP FOR: Main Campus Dining Services

NAME OF PROPOSER: _____

ACKNOWLEDGEMENT OF RECEIPT OF ADDENDA

The undersigned, hereby acknowledges the receipt of the following addenda:

Addendum No. 1 dated 11/13/24

Addendum No. dated

Addendum No. dated

Addendum No. dated

Addendum No. dated

As stated in the RFP documents, this form is included in our Proposal.

Signature

Name Printed

Title

Date

END OF FORM

Questions and Answers for RFP 25-02, Main Campus Dining Services

| No. | Question | PGCC Response |
|-----|--|---|
| 1 | PGCC is asking for commissions on sales by segment, what percentage or dollars are you currently receiving from Thompson Hospitality? | <p>There are currently no contracted food services on campus; therefore, commission is not being received to The College.</p> <p>Previous commission collected was based on gross sales for the following categories:</p> <p>Manual Dining – 3%</p> <p>Catering Services (Internal 3% & External 5%)</p> <p>Vending Services (Beverage 17% & Snack 12%)</p> <p>Encore Café sales will be considered manual dining as no other category is a required service.</p> |
| 2 | The contract (Appendix C) reads like a management fee agreement not a straight profit and loss. Can you please clarify if the desired agreement is a fee or profit and loss agreement? | The awarded contract will be a commission based contract. |
| 3 | Can you please provide a copy of the current dining services agreement? | The College does not have a current dining service agreement with any vendor. |
| 4 | Attachment A - Student enrollment details the enrollment but does not designate on campus versus online students. Can you please provide Genuine Foods with your daily main campus student population? | <p>For Fall 2024, the total number of active students taking at least one class on largo's campus was 10,570 (2,705 Continuing Education; 7,865 Credit).</p> <p>For Spring 2024, the total number of active students taking at least one class on largo's campus was 8530 (2,591 Continuing Education; 5,939 Credit).</p> |

| | | |
|----|--|---|
| 5 | Is the college open to considering an alternative financial model, such as a management fee? | The College is not looking to adopt a management fee model. |
| 6 | Can you provide CAD drawings or blueprints and photos of the Encore Café? | Detailed pictures of the Café are included. The Center of Performing Art blueprint is included. |
| 7 | Will the awarded vendor be the first choice for café services when the Charlene M. Dukes Student Center renovation is completed? | The awarded vendor may not be the first choice to provide food services at the Charlene M. Dukes Center upon renovation completion; however, they may participate in the RFP process for that location once it commences. |
| 8 | Please provide an equipment inventory list for Encore Café. | The most recent inventory list is included . |
| 9 | Does PGCC have a composting program on campus? | The Culinary Arts Program at PGCC has a composting program but one will need to be established and designated for the Encore Café and future dining site inside the Charlene M. Dukes Student Center. |
| 10 | Total commission dollar amount received from dining in each of the past two years. | Total Dining Commission: FY23 January -December \$7,351.92 FY24 January – May \$8,829.48 |
| 11 | I am writing to inquire if PGCC would be open to considering an alternative financial model, such as a management fee. | The college is not looking to adopt the management fee model. |

Encore Pictures





















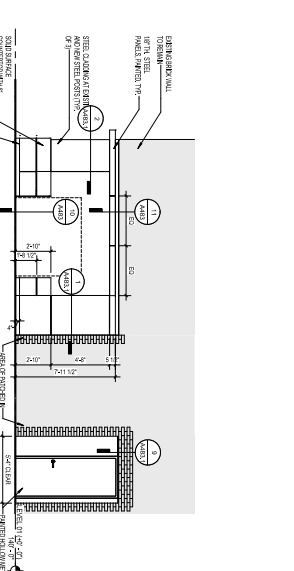
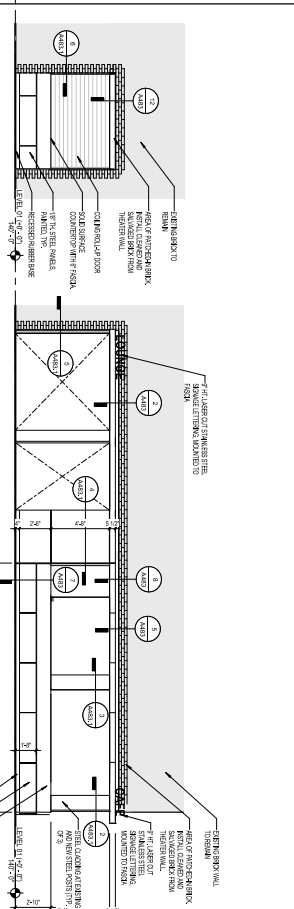




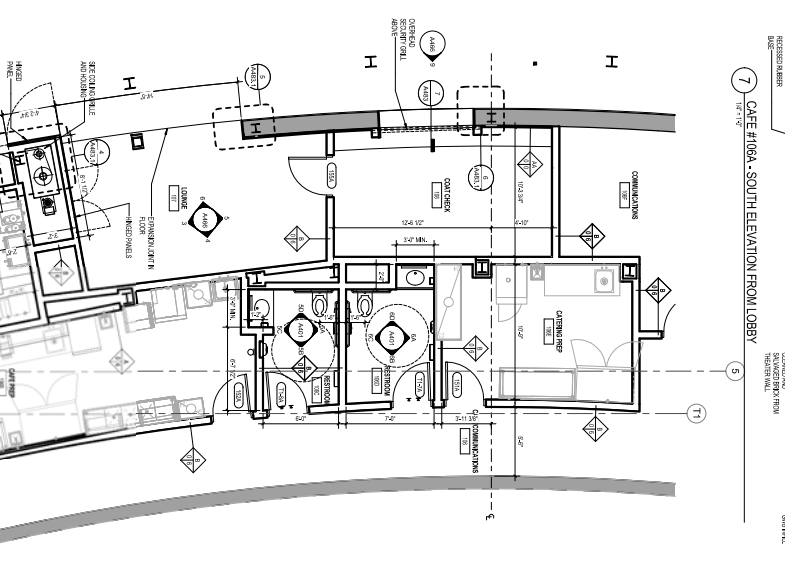
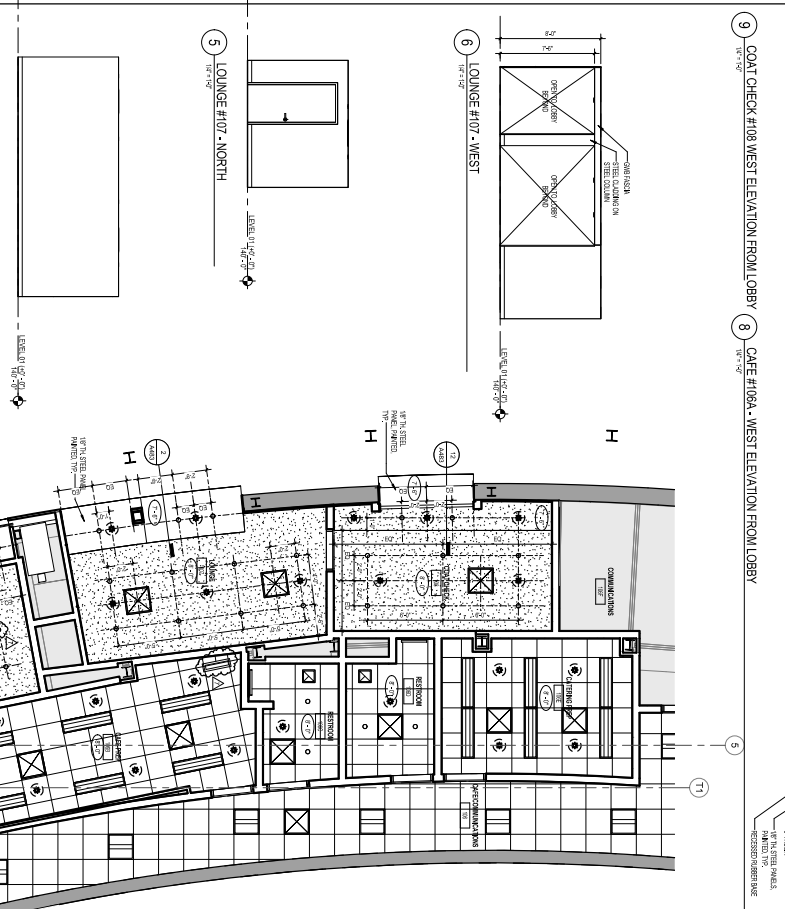




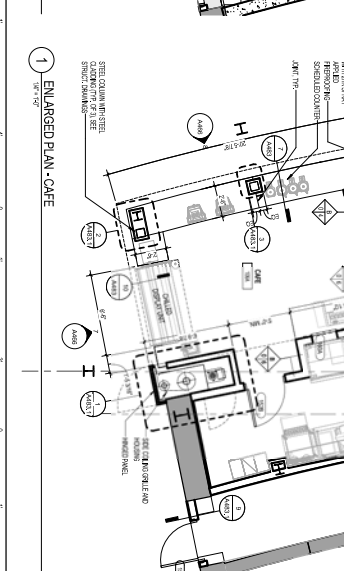
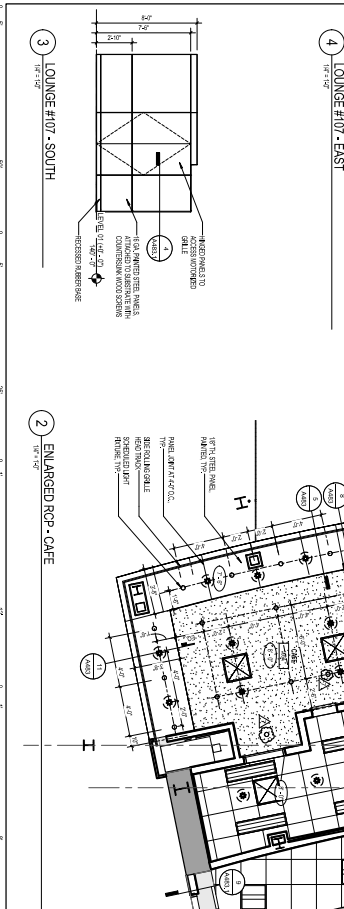




- NOTES**
1. SEE ELEVATION FOR THE FINISHES TO BE USED IN THE LOBBY.
 2. FINISHES TO BE USED IN THE LOBBY ARE SHOWN IN THE FINISH SCHEDULE.
 3. FINISHES TO BE USED IN THE LOBBY ARE SHOWN IN THE FINISH SCHEDULE.
 4. FINISHES TO BE USED IN THE LOBBY ARE SHOWN IN THE FINISH SCHEDULE.
 5. FINISHES TO BE USED IN THE LOBBY ARE SHOWN IN THE FINISH SCHEDULE.
 6. FINISHES TO BE USED IN THE LOBBY ARE SHOWN IN THE FINISH SCHEDULE.
 7. FINISHES TO BE USED IN THE LOBBY ARE SHOWN IN THE FINISH SCHEDULE.
 8. FINISHES TO BE USED IN THE LOBBY ARE SHOWN IN THE FINISH SCHEDULE.
 9. FINISHES TO BE USED IN THE LOBBY ARE SHOWN IN THE FINISH SCHEDULE.
 10. FINISHES TO BE USED IN THE LOBBY ARE SHOWN IN THE FINISH SCHEDULE.
 11. FINISHES TO BE USED IN THE LOBBY ARE SHOWN IN THE FINISH SCHEDULE.
 12. FINISHES TO BE USED IN THE LOBBY ARE SHOWN IN THE FINISH SCHEDULE.
 13. FINISHES TO BE USED IN THE LOBBY ARE SHOWN IN THE FINISH SCHEDULE.
 14. FINISHES TO BE USED IN THE LOBBY ARE SHOWN IN THE FINISH SCHEDULE.
 15. FINISHES TO BE USED IN THE LOBBY ARE SHOWN IN THE FINISH SCHEDULE.
 16. FINISHES TO BE USED IN THE LOBBY ARE SHOWN IN THE FINISH SCHEDULE.
 17. FINISHES TO BE USED IN THE LOBBY ARE SHOWN IN THE FINISH SCHEDULE.
 18. FINISHES TO BE USED IN THE LOBBY ARE SHOWN IN THE FINISH SCHEDULE.
 19. FINISHES TO BE USED IN THE LOBBY ARE SHOWN IN THE FINISH SCHEDULE.
 20. FINISHES TO BE USED IN THE LOBBY ARE SHOWN IN THE FINISH SCHEDULE.



- NOTES**
1. SEE ELEVATION FOR THE FINISHES TO BE USED IN THE LOBBY.
 2. FINISHES TO BE USED IN THE LOBBY ARE SHOWN IN THE FINISH SCHEDULE.
 3. FINISHES TO BE USED IN THE LOBBY ARE SHOWN IN THE FINISH SCHEDULE.
 4. FINISHES TO BE USED IN THE LOBBY ARE SHOWN IN THE FINISH SCHEDULE.
 5. FINISHES TO BE USED IN THE LOBBY ARE SHOWN IN THE FINISH SCHEDULE.
 6. FINISHES TO BE USED IN THE LOBBY ARE SHOWN IN THE FINISH SCHEDULE.
 7. FINISHES TO BE USED IN THE LOBBY ARE SHOWN IN THE FINISH SCHEDULE.
 8. FINISHES TO BE USED IN THE LOBBY ARE SHOWN IN THE FINISH SCHEDULE.
 9. FINISHES TO BE USED IN THE LOBBY ARE SHOWN IN THE FINISH SCHEDULE.
 10. FINISHES TO BE USED IN THE LOBBY ARE SHOWN IN THE FINISH SCHEDULE.
 11. FINISHES TO BE USED IN THE LOBBY ARE SHOWN IN THE FINISH SCHEDULE.
 12. FINISHES TO BE USED IN THE LOBBY ARE SHOWN IN THE FINISH SCHEDULE.
 13. FINISHES TO BE USED IN THE LOBBY ARE SHOWN IN THE FINISH SCHEDULE.
 14. FINISHES TO BE USED IN THE LOBBY ARE SHOWN IN THE FINISH SCHEDULE.
 15. FINISHES TO BE USED IN THE LOBBY ARE SHOWN IN THE FINISH SCHEDULE.
 16. FINISHES TO BE USED IN THE LOBBY ARE SHOWN IN THE FINISH SCHEDULE.
 17. FINISHES TO BE USED IN THE LOBBY ARE SHOWN IN THE FINISH SCHEDULE.
 18. FINISHES TO BE USED IN THE LOBBY ARE SHOWN IN THE FINISH SCHEDULE.
 19. FINISHES TO BE USED IN THE LOBBY ARE SHOWN IN THE FINISH SCHEDULE.
 20. FINISHES TO BE USED IN THE LOBBY ARE SHOWN IN THE FINISH SCHEDULE.



- NOTES**
1. SEE ELEVATION FOR THE FINISHES TO BE USED IN THE LOBBY.
 2. FINISHES TO BE USED IN THE LOBBY ARE SHOWN IN THE FINISH SCHEDULE.
 3. FINISHES TO BE USED IN THE LOBBY ARE SHOWN IN THE FINISH SCHEDULE.
 4. FINISHES TO BE USED IN THE LOBBY ARE SHOWN IN THE FINISH SCHEDULE.
 5. FINISHES TO BE USED IN THE LOBBY ARE SHOWN IN THE FINISH SCHEDULE.
 6. FINISHES TO BE USED IN THE LOBBY ARE SHOWN IN THE FINISH SCHEDULE.
 7. FINISHES TO BE USED IN THE LOBBY ARE SHOWN IN THE FINISH SCHEDULE.
 8. FINISHES TO BE USED IN THE LOBBY ARE SHOWN IN THE FINISH SCHEDULE.
 9. FINISHES TO BE USED IN THE LOBBY ARE SHOWN IN THE FINISH SCHEDULE.
 10. FINISHES TO BE USED IN THE LOBBY ARE SHOWN IN THE FINISH SCHEDULE.
 11. FINISHES TO BE USED IN THE LOBBY ARE SHOWN IN THE FINISH SCHEDULE.
 12. FINISHES TO BE USED IN THE LOBBY ARE SHOWN IN THE FINISH SCHEDULE.
 13. FINISHES TO BE USED IN THE LOBBY ARE SHOWN IN THE FINISH SCHEDULE.
 14. FINISHES TO BE USED IN THE LOBBY ARE SHOWN IN THE FINISH SCHEDULE.
 15. FINISHES TO BE USED IN THE LOBBY ARE SHOWN IN THE FINISH SCHEDULE.
 16. FINISHES TO BE USED IN THE LOBBY ARE SHOWN IN THE FINISH SCHEDULE.
 17. FINISHES TO BE USED IN THE LOBBY ARE SHOWN IN THE FINISH SCHEDULE.
 18. FINISHES TO BE USED IN THE LOBBY ARE SHOWN IN THE FINISH SCHEDULE.
 19. FINISHES TO BE USED IN THE LOBBY ARE SHOWN IN THE FINISH SCHEDULE.
 20. FINISHES TO BE USED IN THE LOBBY ARE SHOWN IN THE FINISH SCHEDULE.

LOBBY CAFE

DATE: 11/20/16
 SCALE: As Noted
 DRAWN BY: [Name]
 CHECKED BY: [Name]
 APPROVED BY: [Name]

A466

ISSUE NAME:

REV. DATE DESCRIPTION:

1. 11/20/16 REVISION TO FINISHES TO BE USED IN THE LOBBY.

2. 11/20/16 REVISION TO FINISHES TO BE USED IN THE LOBBY.

3. 11/20/16 REVISION TO FINISHES TO BE USED IN THE LOBBY.

4. 11/20/16 REVISION TO FINISHES TO BE USED IN THE LOBBY.

5. 11/20/16 REVISION TO FINISHES TO BE USED IN THE LOBBY.

6. 11/20/16 REVISION TO FINISHES TO BE USED IN THE LOBBY.

7. 11/20/16 REVISION TO FINISHES TO BE USED IN THE LOBBY.

8. 11/20/16 REVISION TO FINISHES TO BE USED IN THE LOBBY.

9. 11/20/16 REVISION TO FINISHES TO BE USED IN THE LOBBY.

10. 11/20/16 REVISION TO FINISHES TO BE USED IN THE LOBBY.

11. 11/20/16 REVISION TO FINISHES TO BE USED IN THE LOBBY.

12. 11/20/16 REVISION TO FINISHES TO BE USED IN THE LOBBY.

13. 11/20/16 REVISION TO FINISHES TO BE USED IN THE LOBBY.

14. 11/20/16 REVISION TO FINISHES TO BE USED IN THE LOBBY.

15. 11/20/16 REVISION TO FINISHES TO BE USED IN THE LOBBY.

16. 11/20/16 REVISION TO FINISHES TO BE USED IN THE LOBBY.

17. 11/20/16 REVISION TO FINISHES TO BE USED IN THE LOBBY.

18. 11/20/16 REVISION TO FINISHES TO BE USED IN THE LOBBY.

19. 11/20/16 REVISION TO FINISHES TO BE USED IN THE LOBBY.

20. 11/20/16 REVISION TO FINISHES TO BE USED IN THE LOBBY.

PEPPER PARTNERS ARCHITECTS P.C.

10000 RIVER ROAD
 SUITE 200
 LARGO, MD 21074
 PHONE: 301.336.6000

PRINCE GEORGE'S COMMUNITY COLLEGE

301 LARGO ROAD
 LARGO, MARYLAND 20774
 PHONE: 301.336.6000

STATE OF MD PROJECT NO.: CC-09-MC-12-437

ARCHITECTS

THE ARCHITECTS

CONSULTANTS

ENGINEERS

PLUMBERS

ELECTRICAL

Mechanical

Structural

Interior Design

Acoustic

Lighting

Security

Accessibility

Historic Preservation

Archaeology

Environmental

Energy

Fire

Life Safety

Transportation

Water

Sewer

Stormwater

Public Works

Police

Fire Department

Emergency Services

Public Safety

Community Development

Urban Planning

Transportation Planning

Public Utilities

Government

Non-Profit

Education

Healthcare

Financial Services

Real Estate

Construction

Manufacturing

Retail

Food Service

Hotel

Residential

Commercial

Industrial

Marine

Agriculture

Energy

Transportation

Infrastructure

Public Works

Police

Fire Department

Emergency Services

Public Safety

Community Development

Urban Planning

Transportation Planning

Public Utilities

Government

Non-Profit

Education

Healthcare

Financial Services

Real Estate

Construction

Manufacturing

Retail

Food Service

Hotel

Residential

Commercial

Industrial

Marine

Agriculture

Energy

Transportation

Infrastructure

| Description | Manufacturer | Product Number | MFG | MODEL NO | VENDOR |
|-------------------------------|---------------------|----------------|-----------------------|-------------|----------------|
| TABLE RECTANGULAR FOLDING | NOT APPLICABLE | NA | MITY-LITE | 30" X 6' | MITY-LITE |
| STORAGE LOCKER | NOT APPLICABLE | NA | NEXEL | LOCKER - 3 | |
| POPCORN MAKER | STAR | 39S-A | STAR MFG CO | 39S A | STAR MFG CO |
| COFFEE MAKER SATELLITE SYSTEM | BUNN | 33500 0000 | BUNN O MATIC | 335000000 | BUNN O MATIC |
| INDOOR NETWORK CAMERA | PELCO | IME219-1S | PELCO | IME219 1S | PELCO |
| SINK HAND | EAGLE GROUP | MA2-22 | METAL MASTERS | HWC E | METAL MASTERS |
| REFIGERATED SERVICE CASE | STRUCTURAL CONCEPTS | HMG7553R | STRUC CONCEPTS | HMG7553R | STRUC CONCEPTS |
| REFRIGERATOR UNDERCOUNTER | TRUE | TWT-27HC | TRUE FOOD | TWT 27HC | TRUE FOOD |
| Ice Bin w/ soda tower | LANCER | 85-210CC-111 | LANCER | 85210CC111 | LANCER |
| SHELVING MOBILE WIRE DRY | NEXEL | CX0211 | METAL MASTERS | 18 24 72 | METAL MASTERS |
| WALL SHELF | METAL MASTERS | | METAL MASTERS | WS1272 143 | METAL MASTERS |
| SINK HAND | EAGLE GROUP | MA2-22 | METAL MASTERS | HWC-E | |
| REFRIGERATOR REACH-IN | HOSHIZAKI | CR2B-HS | HOSHIZAKI | CR2B-HS | |
| TABLE KITCHEN STAINLESS STEEL | TAKE TWO UNLIMITED | TT3027S | METAL MASTERS | T3072SEMBS | METAL MASTERS |
| WALL SHELF | METAL MASTERS | | METAL MASTERS | WSP-1236 | |
| WALL SHELF | METAL MASTERS | | METAL MASTERS | WSP-1236 | |
| SINK POT | METAL MASTERS | 314-16-3-I8RL | METAL MASTERS | 314 16318RL | METAL MASTERS |
| BLENDER BAR | VITA MIX | NA | VITAMIXER | VITA PREP | VITAMIXER |
| STOOL W/CASTERS | NOT APPLICABLE | NA | MCE | C15A | MCE |
| ACCESS POINT WIRELESS | ARUBA | AP-335 | ARUBA | AP 335 | SKYLINE |
| ACCESS POINT WIRELESS | ARUBA | AP-335 | ARUBA | AP 335 | SKYLINE |
| FAN FLOORSTANDING | NOT APPLICABLE | NA | | | |
| CHAIR 4-LEGGED | NOT APPLICABLE | NA | GRAND RAPIDS CHAIR CO | 577 | |
| COFFEE BREWER | BUNN | | BUNN O MATIC | SH 1.5 | BUNN O MATIC |
| COFFEE BREWER | BUNN | | BUNN O MATIC | SH 1.5 | BUNN O MATIC |
| SHELVING MOBILE WIRE DRY | NEXEL | CX0211 | METAL MASTERS | 36 72 | METAL MASTERS |
| SHELVING MOBILE WIRE DRY | NEXEL | CX0211 | METAL MASTERS | 24 72 | METAL MASTERS |
| REFRIGERATOR PIZZA PREP | TRUE | TPP-44 | TRUE FOOD SERV | TPP44 | TRUE FOOD |
| WALL SHELF | METAL MASTERS | | METAL MASTERS | WS1272 143 | METAL MASTERS |
| SINK HAND | EAGLE GROUP | MA2-22 | METAL MASTERS | HWC-E | |
| FREEZER CHEST | HOSHIZAKI | | HOSHIZAKI | CF1B-FS | |
| ICE CUBER WITH BIN | HOSHIZAKI | KM-101BAH | HOSHIZAKI | CF1B FS | HOSHIZAKI |
| ICE STORAGE BIN | HOSHIZAKI | B-500PF | HOSHIZAKI | B500PF | HOSHIZAKI |

| | | | | | |
|-------------------------------|--------------------|----------------|---------------|----------------|---------------|
| SINK MOP | EAGLE GROUP | F1916-12 | METAL MASTERS | F1916/312690 | |
| OVEN CONVEYOR HIGH SPEED | TURBO CHEF | HHC2020-STD | TURBOCHEF | 15 9369 | TURBOCHEF |
| OVEN CONVEYOR HIGH SPEED | TURBO CHEF | HHC2020-STD | TURBOCHEF | 15 9369 | TURBOCHEF |
| CART STACKING FOR OVENS | TURBO CHEF | CS0021 | TURBO CHEF | STACKING STAND | |
| TABLE KITCHEN STAINLESS STEEL | TAKE TWO UNLIMITED | TT3027S | METAL MASTERS | T3072SEMBS | |
| STORAGE CABINET MOBILE | NOT APPLICABLE | NA | | | |
| SHELVING MOBILE WIRE DRY | NEXEL | CX0211 | METAL MASTERS | LARGEST | |
| CASH REGISTER | CASIO | T2300PCR | CASIO | T2300PCR | CASIO |
| TOASTER CONVEYER | | | HATCO CORP | TQX0011 | HATCO CORP |
| SINK HAND | EAGLE GROUP | MA2-22 | METAL MASTERS | HWC E | METAL MASTERS |
| STOOL W/CASTERS | NOT APPLICABLE | NA | MCE | C15A | MCE |
| ACCESS POINT WIRELESS | ARUBA | AP-335 | ARUBA | AP 335 | SKYLINE |
| CASH REGISTER | CASIO | T2300PCR | CASIO | T2300PCR | CASIO |
| COFFEE BREWER | BUNN | | BUNN O MATIC | SH 1.5 | BUNN O MATIC |
| COFFEE BREWER | BUNN | | BUNN O MATIC | SH 1.5 | BUNN O MATIC |
| COFFEE SHUTTLE WARMER | BUNN | ISH | BUNN O MATIC | ISH | BUNN O MATIC |
| COFFEE SHUTTLE WARMER | BUNN | ISH | BUNN O MATIC | ISH | BUNN O MATIC |
| COFFEE SHUTTLE WARMER | BUNN | ISH | BUNN O MATIC | ISH | BUNN O MATIC |
| COFFEE SHUTTLE WARMER | BUNN | ISH | BUNN O MATIC | ISH | BUNN O MATIC |
| COFFEE GRINDER | NUOVA | MDX | NUOVA | MDX | NUOVA |
| COFFEE GRINDER | NUOVA | MDX | NUOVA | MDX | NUOVA |
| COFFEE GRINDER | BUNN | 33700 0000 | BUNN O MATIC | 337000000 | BUNN O MATIC |
| COFFEE GRINDER | BUNN | 33700 0000 | BUNN O MATIC | 337000000 | BUNN O MATIC |
| CUP DISPENSER | SAN JAMAR | C2804 | SAN JAMAR | C2804 | SAN JAMAR |
| FOOD WARMER COUNTER UNIT | TRUE | 1220CWD-120 | METAL MASTERS | 1220CWD 120 | METAL MASTERS |
| OVEN ELECTRI CONVECTION | MOFFAT | E32D5/OVR/SK32 | MOFFAT | E32D5/OVR/SK32 | |
| TABLE KITCHEN STAINLESS STEEL | TAKE TWO UNLIMITED | TT3027S | METAL MASTERS | T3072SEMBS | |
| REFRIGERATOR REACH-IN | HOSHIZAKI | CR2B-HS | HOSHIZAKI | CR2B-FS | |
| TABLE KITCHEN STAINLESS STEEL | TAKE TWO UNLIMITED | TT3027S | METAL MASTERS | T3072SEMBS | METAL MASTERS |
| SWITCH ETHERNET | JUNIPER NETWORKS | EX2200 | | | |
| SWITCH ETHERNET | JUNIPER NETWORKS | EX4300-48P | | | |
| SWITCH ETHERNET | JUNIPER NETWORKS | EX4300-48P | | | |
| SWITCH ETHERNET | JUNIPER NETWORKS | EX4300-48P | | | |
| SWITCH ETHERNET | JUNIPER NETWORKS | EX4300-48P | | | |

| | | |
|-------------------------|------------------|------------|
| SWITCH ETHERNET | JUNIPER NETWORKS | EX4300-48P |
| POWER DISTRIBUTION UNIT | APC | AP7811B |
| POWER DISTRIBUTION UNIT | APC | SRT5KRMTF |
| POWER DISTRIBUTION UNIT | APC | SRT5KRMXLT |
| POWER DISTRIBUTION UNIT | APC | AP7811B |
| POWER DISTRIBUTION UNIT | APC | SRT5KRMTF |
| POWER DISTRIBUTION UNIT | APC | SRT5KRMXLT |