

DUKES STUDENT CENTER

SCHEMATIC DESIGN

04.12.2024

Dukes Student Center

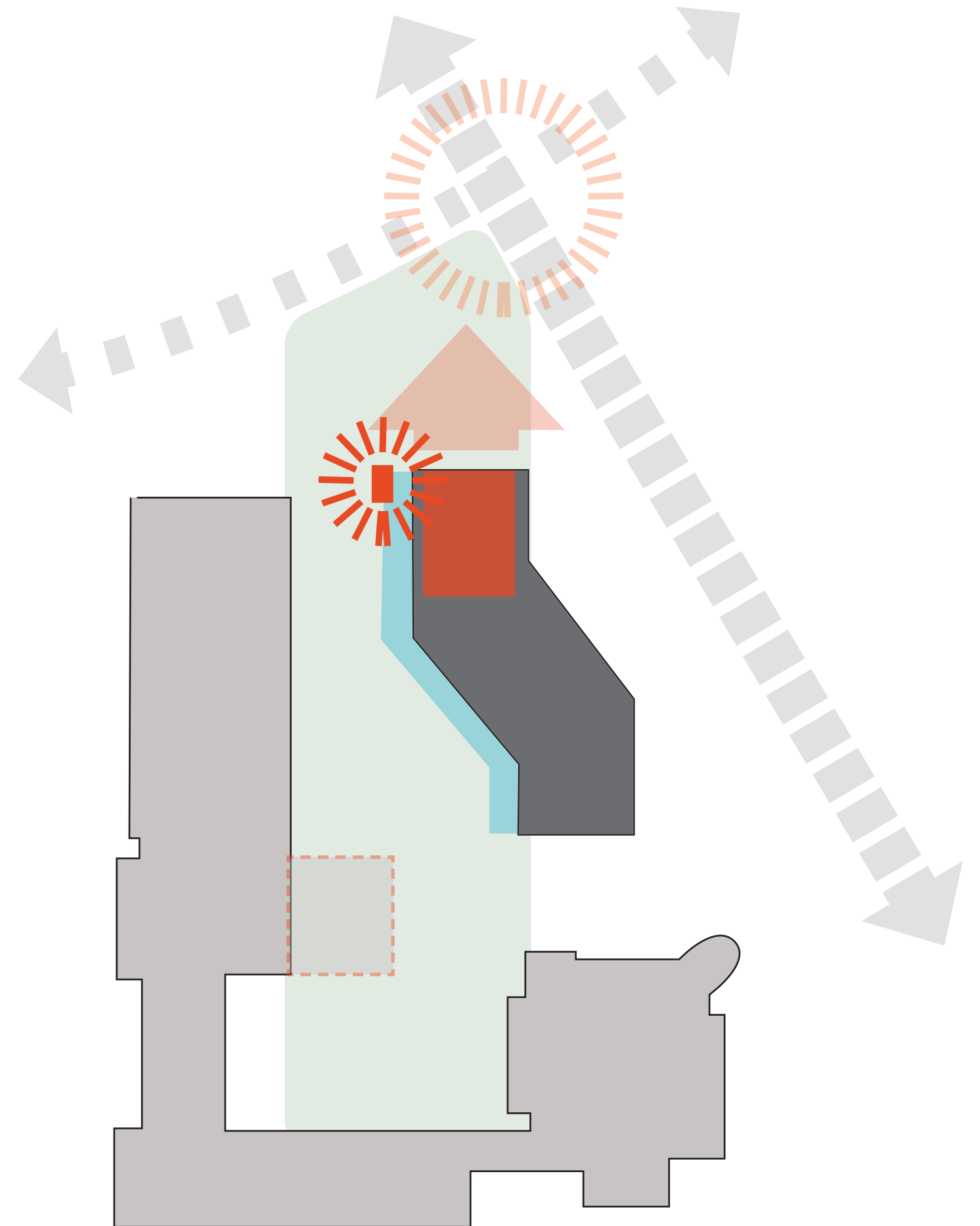
The Charlene M. Dukes Student Center will play a fundamental role in contributing to student success and campus identity.

Create a new “Gateway” to campus at the corner of Route 202 and Campus Way South.

A VERTICAL MARKER

“RUBY WITHIN A DIAMOND”

CONNECTED BY A NEW LANDSCAPE GATEWAY



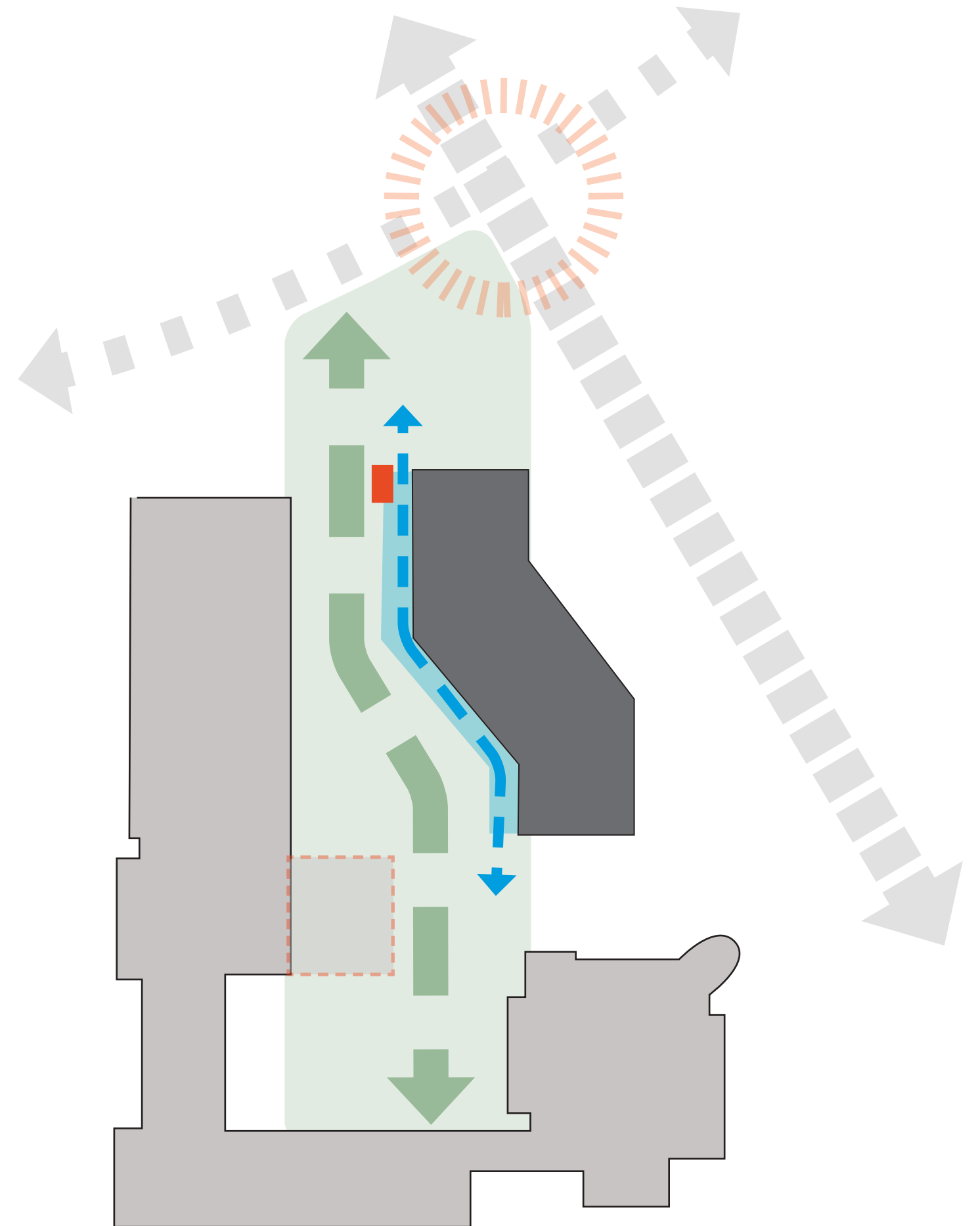
Dukes Student Center

The Charlene M. Dukes Student Center will play a fundamental role in contributing to student success and campus identity.

Create a Sense of Belonging, located at a key edge of the campus and with so many vital functions within its walls, the Charlene M. Dukes Student Center will be a natural gathering place for students.

THE “AMBLE”

The new quad expands alongside the “Amble” creating a versatile series of interior/exterior spaces,



Dukes Student Center

The Charlene M. Dukes Student Center will play a fundamental role in contributing to student success and campus identity.

Integrate academic, community use and special events to create higher levels of experiential learning and student and community engagement.

1

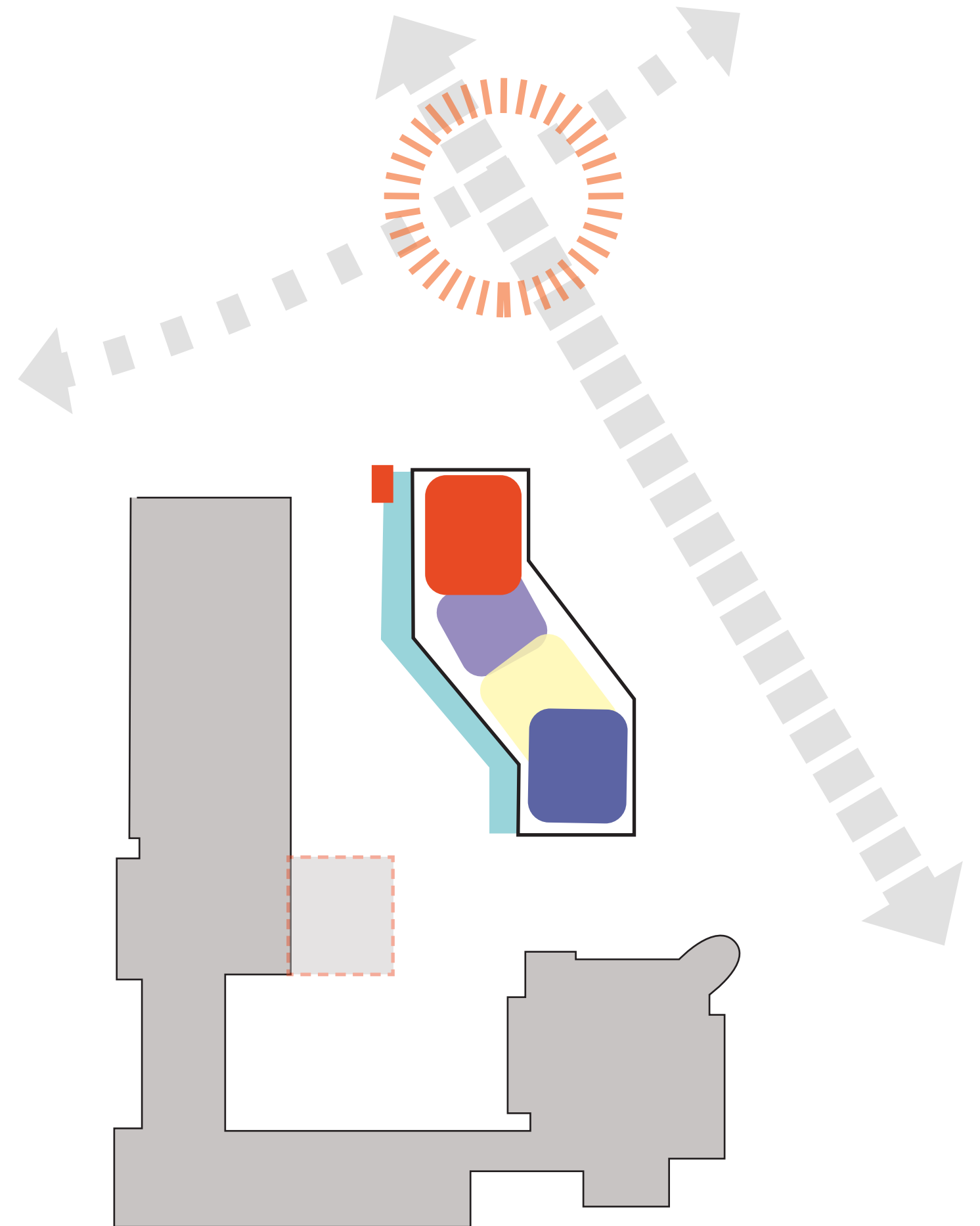
- Forum
- Bookstore
- Dining
- Public Safety

2

- Student Affairs
- Student Success
- Classrooms

3

- Banquet Hall
- Conference Rooms and the Board Room
- Auxiliary Services



Dukes Student Center

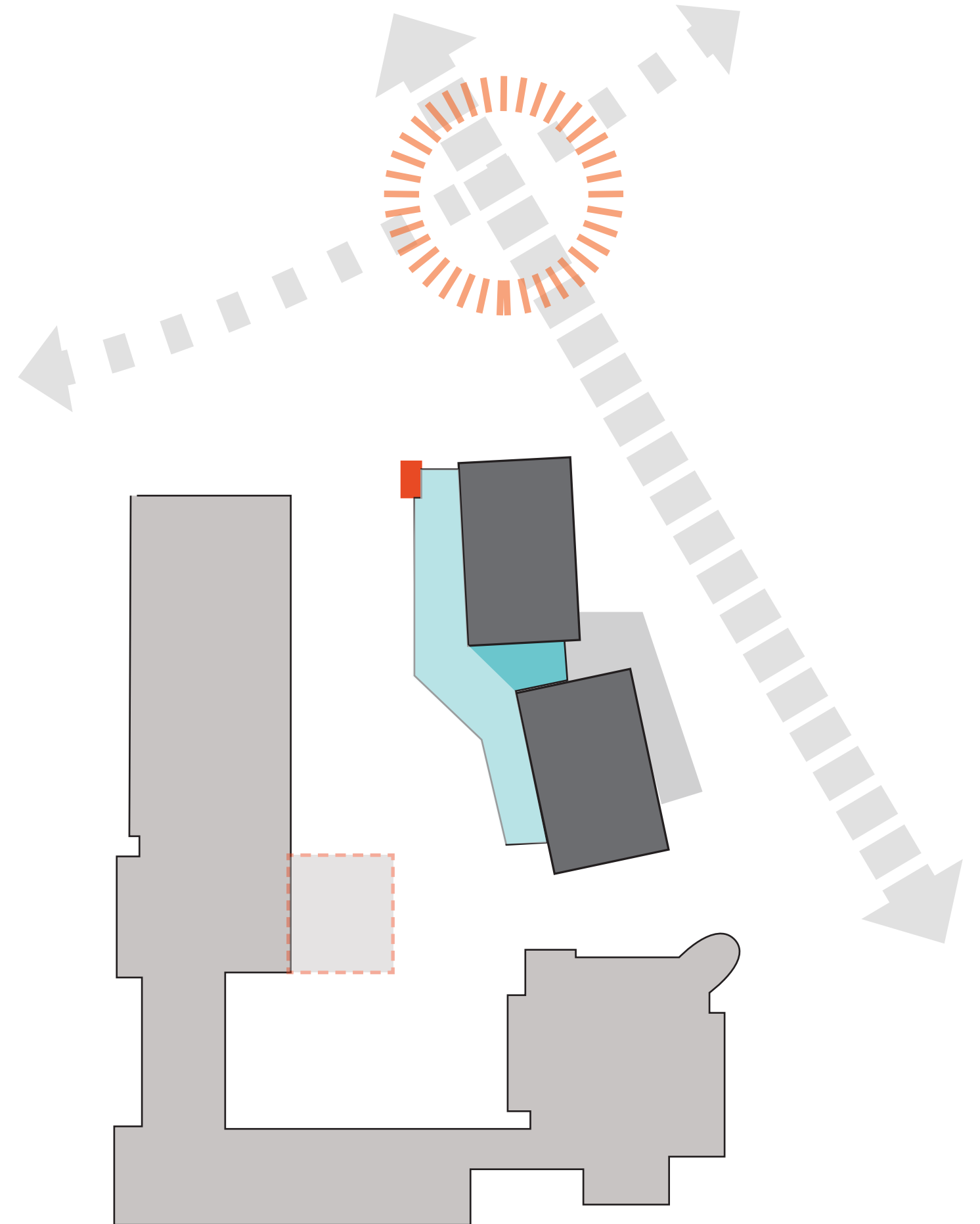
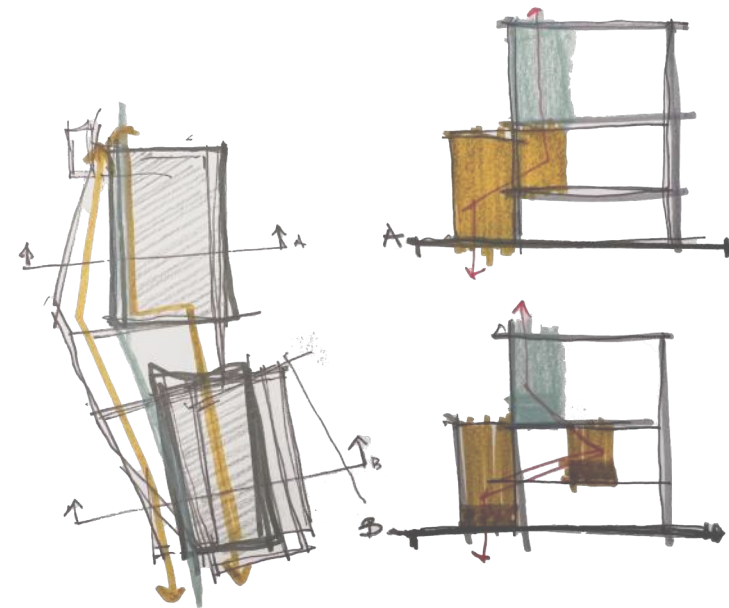
The Charlene M. Dukes Student Center will play a fundamental role in contributing to student success and campus identity.

Clarified the Building Form

Created 2 Distinct Volumes

Defined a Transparent Center

United by the Amble

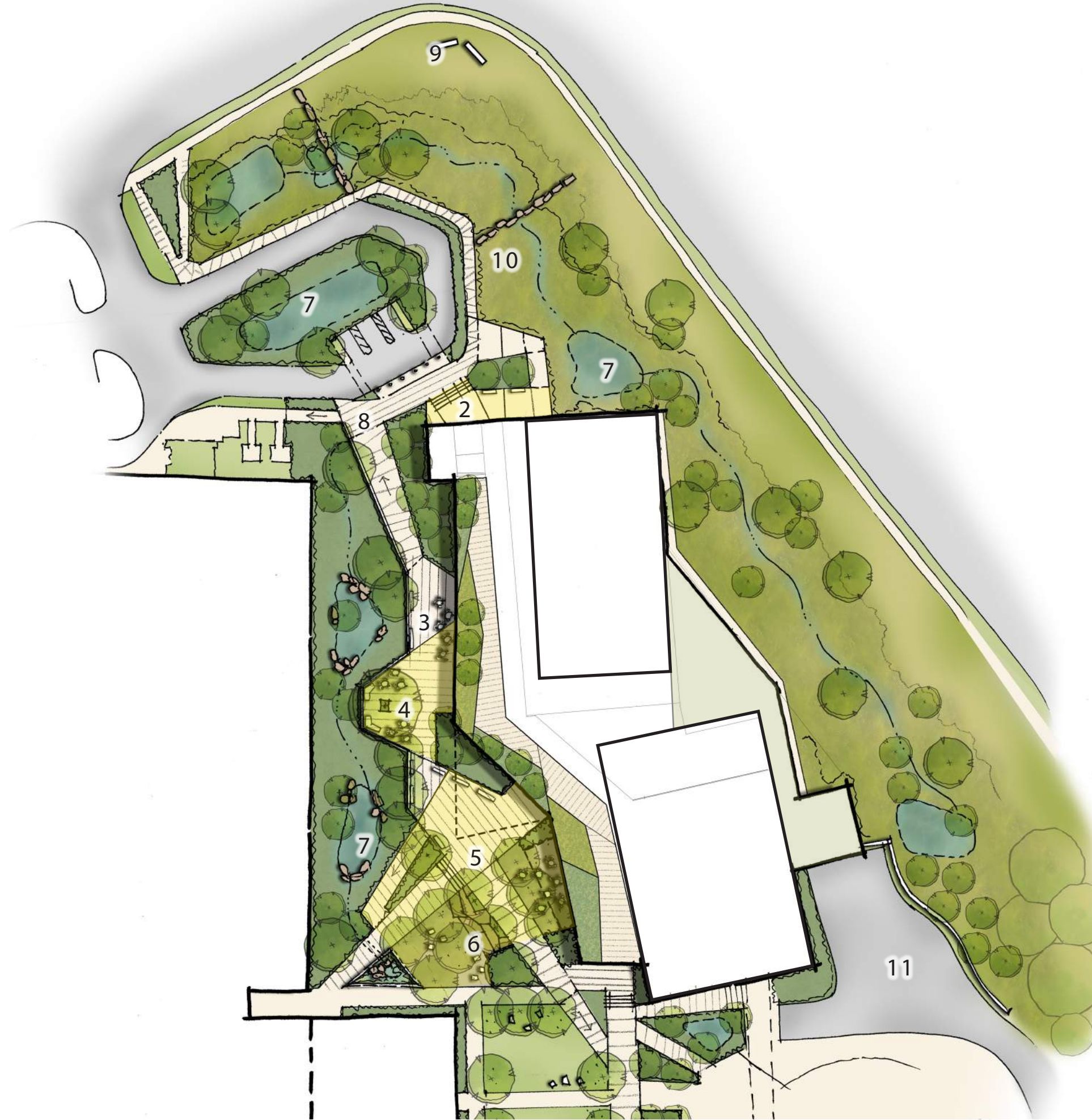


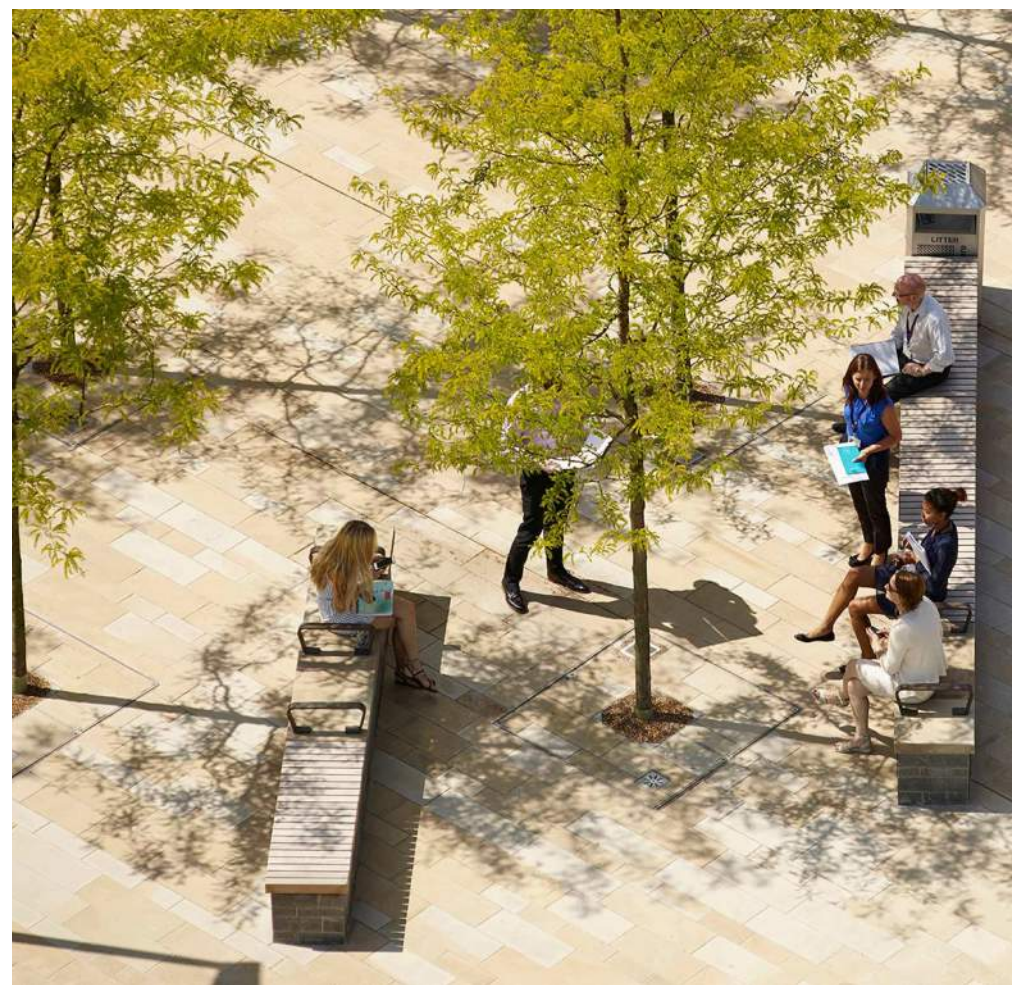
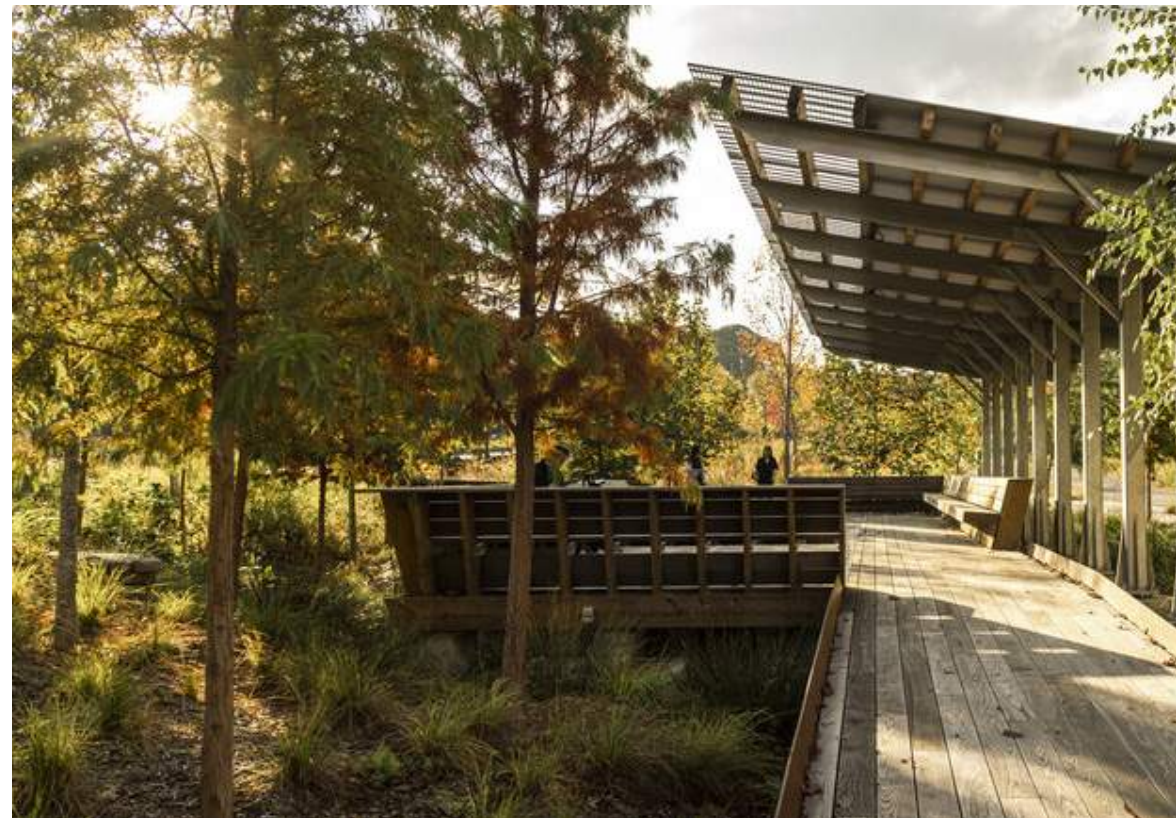
Landscape Design

THE BOARDWALK

KEY

- 1 DROP-OFF AND ACCESSIBLE PARKING
- 2 THEATER PLAZA
- 3 INDOOR OUTDOOR LOUNGE
- 4 "THE OVERLOOK"
- 5 MAIN PLAZA AND ECO-GROVE
- 6 NATURAL STONE AMPITHEATER SEATING
- 7 LIVE AND LEARN LANDSCAPE (LID)
- 8 OPPORTUNITY FOR SIGNAGE
- 9 EXISTING SIGNAGE
- 10 ECO-MEADOW
- 11 SERVICE AREA

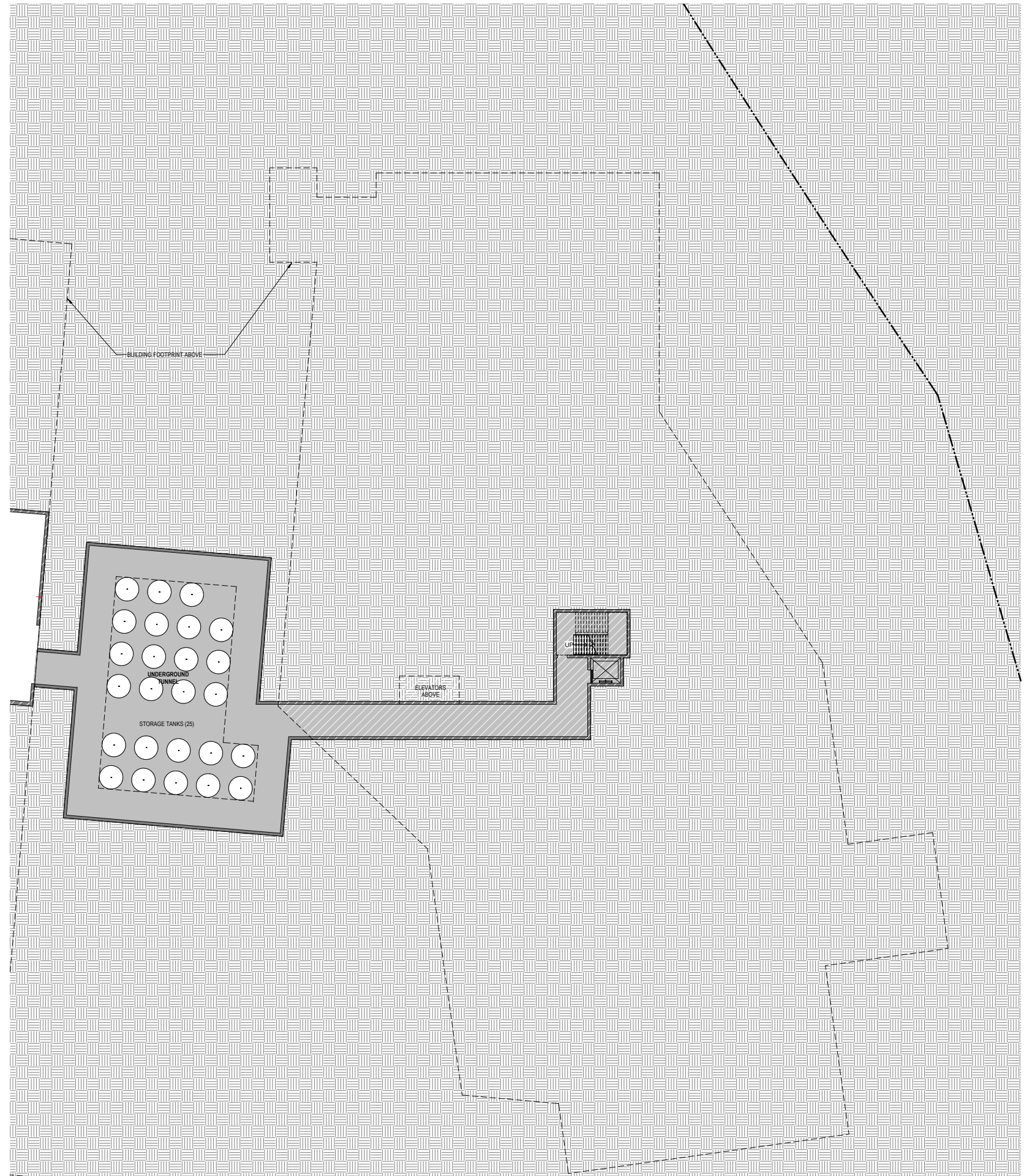




Level U01

DEPARTMENT

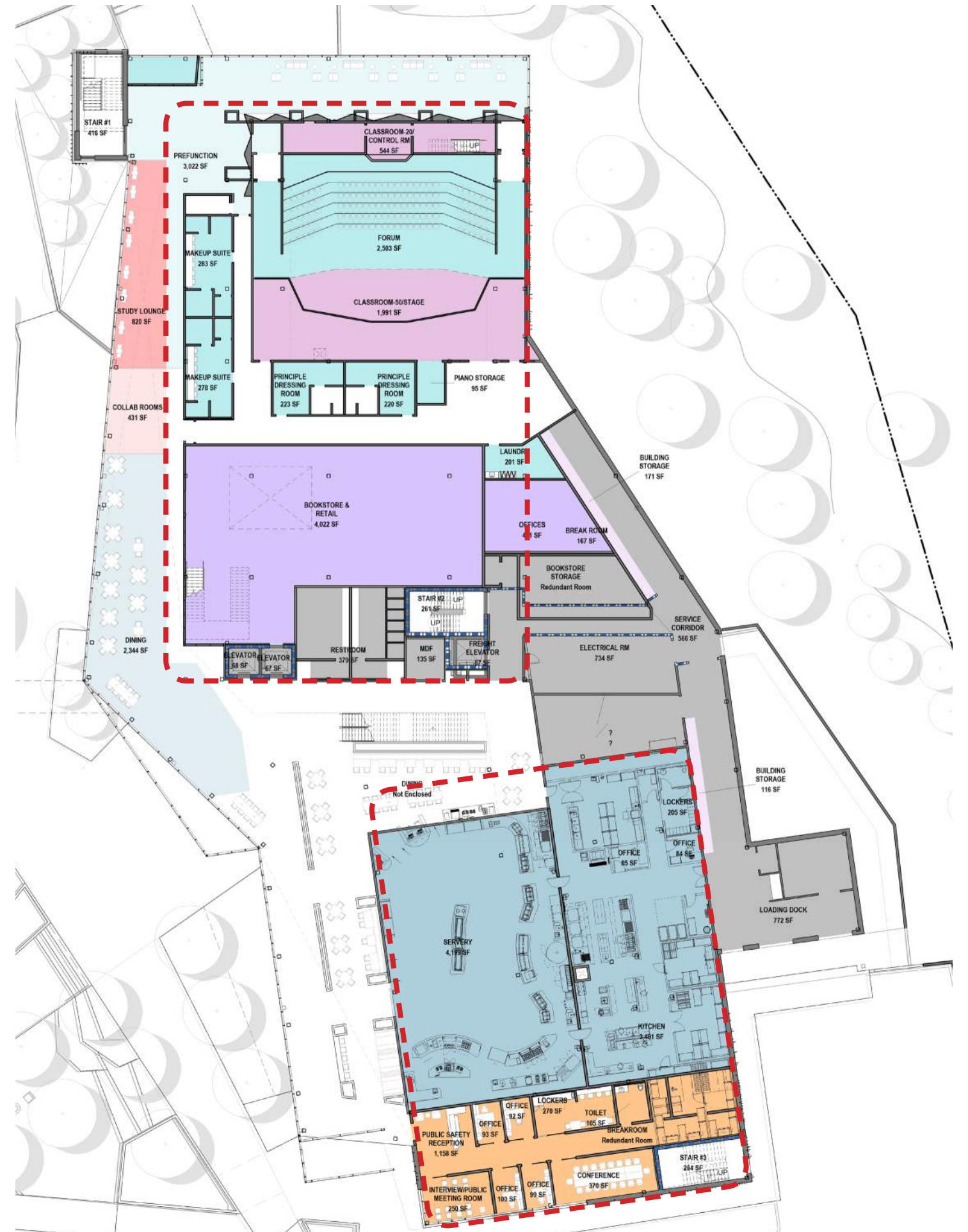
- CAMPUS LIFE/STUDY
- INSTRUCTIONAL
- STUDENT SUCCESS
- FACILITIES & AUX SERVICES
- BOOKSTORE & RETAIL
- ACADEMIC SYMPOSIUM



Level 01

DEPARTMENT

- CAMPUS LIFE/STUDY
- INSTRUCTIONAL
- STUDENT SUCCESS
- FACILITIES & AUX SERVICES
- BOOKSTORE & RETAIL
- ACADEMIC SYMPOSIUM



Level 02

DEPARTMENT

- CAMPUS LIFE/STUDY
- INSTRUCTIONAL
- STUDENT SUCCESS
- FACILITIES & AUX SERVICES
- BOOKSTORE & RETAIL
- ACADEMIC SYMPOSIUM



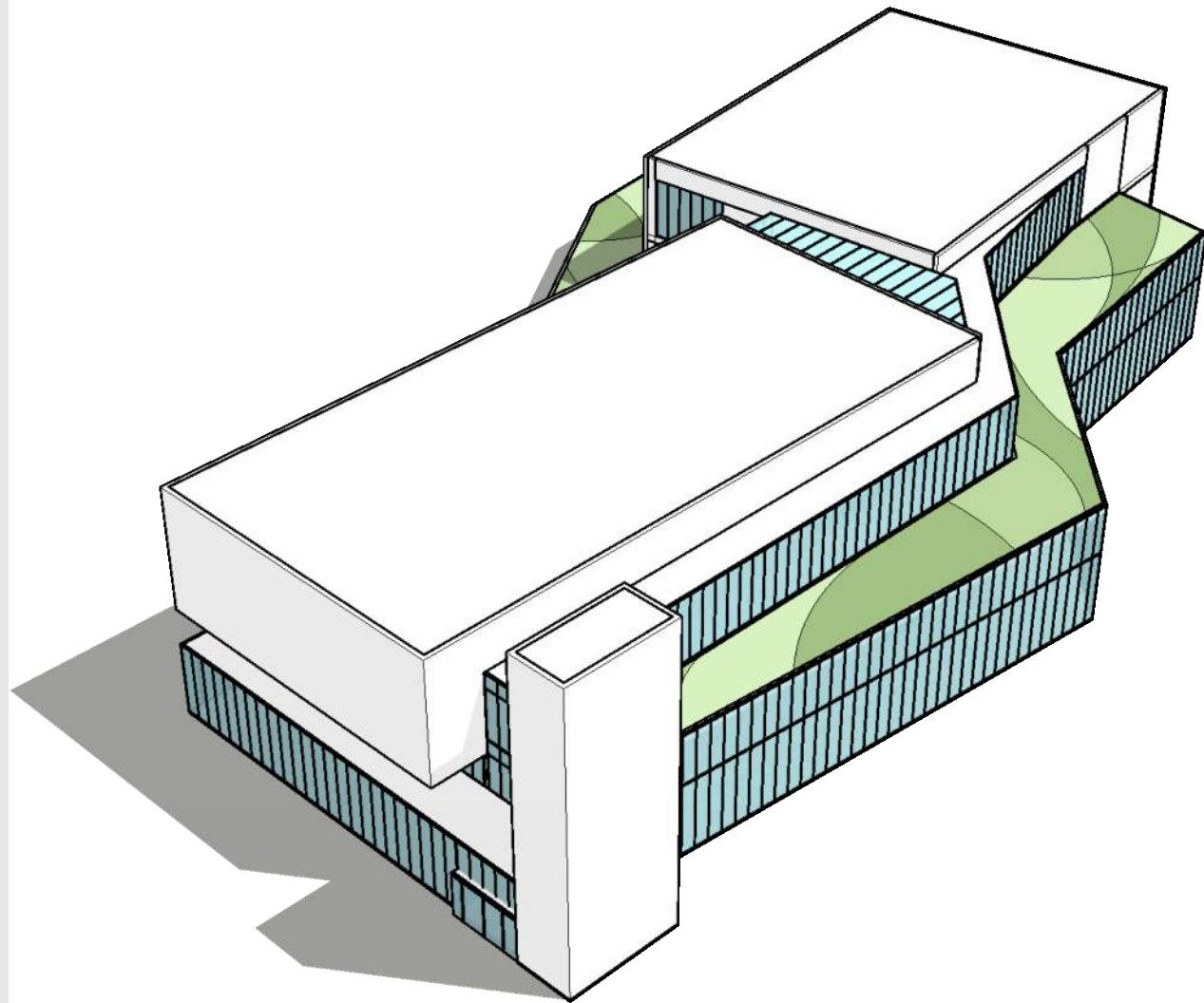
Level 03

DEPARTMENT

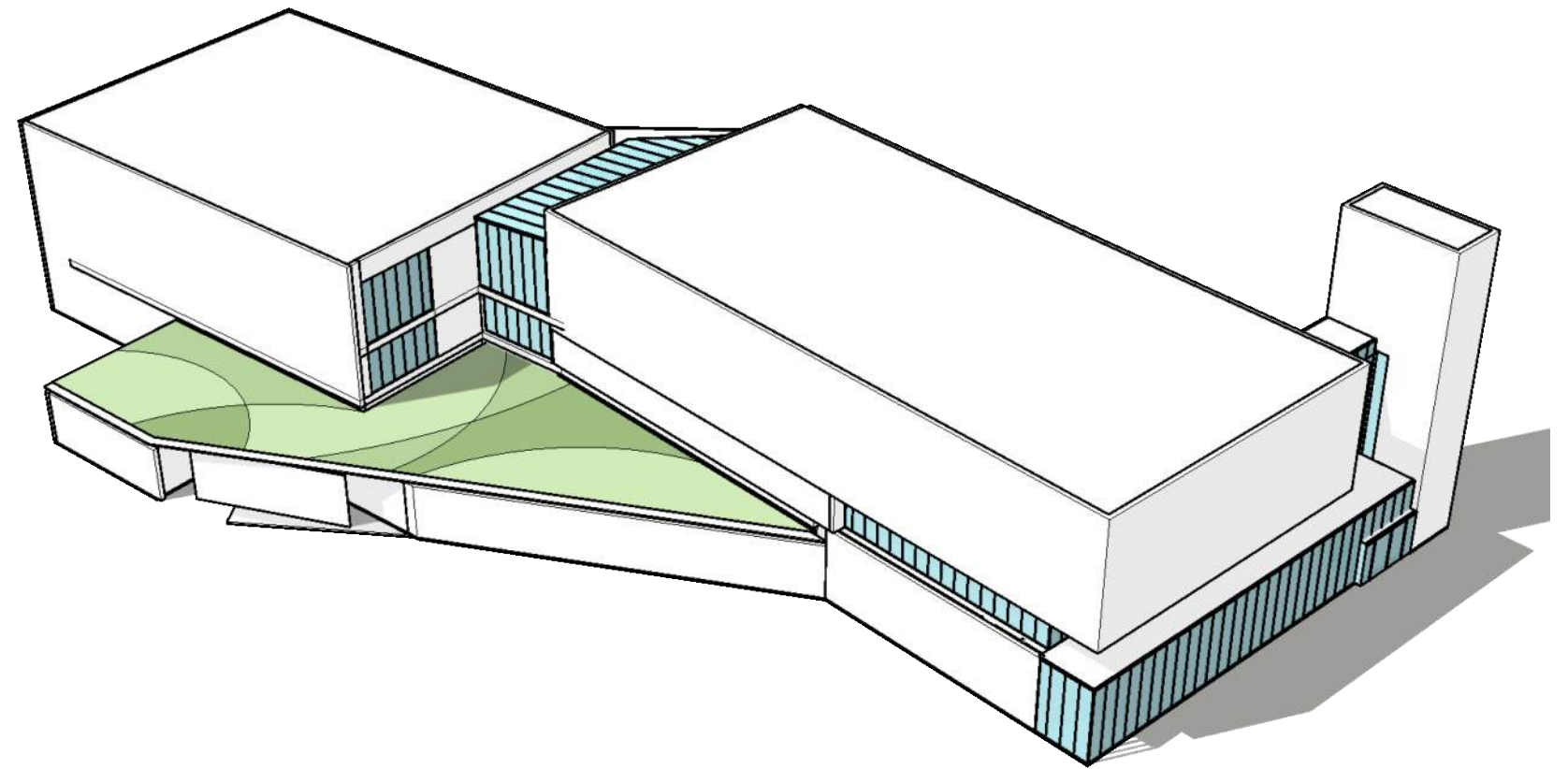
- CAMPUS LIFE/STUDY
- INSTRUCTIONAL
- STUDENT SUCCESS
- FACILITIES & AUX SERVICES
- BOOKSTORE & RETAIL
- ACADEMIC SYMPOSIUM



Building Massing



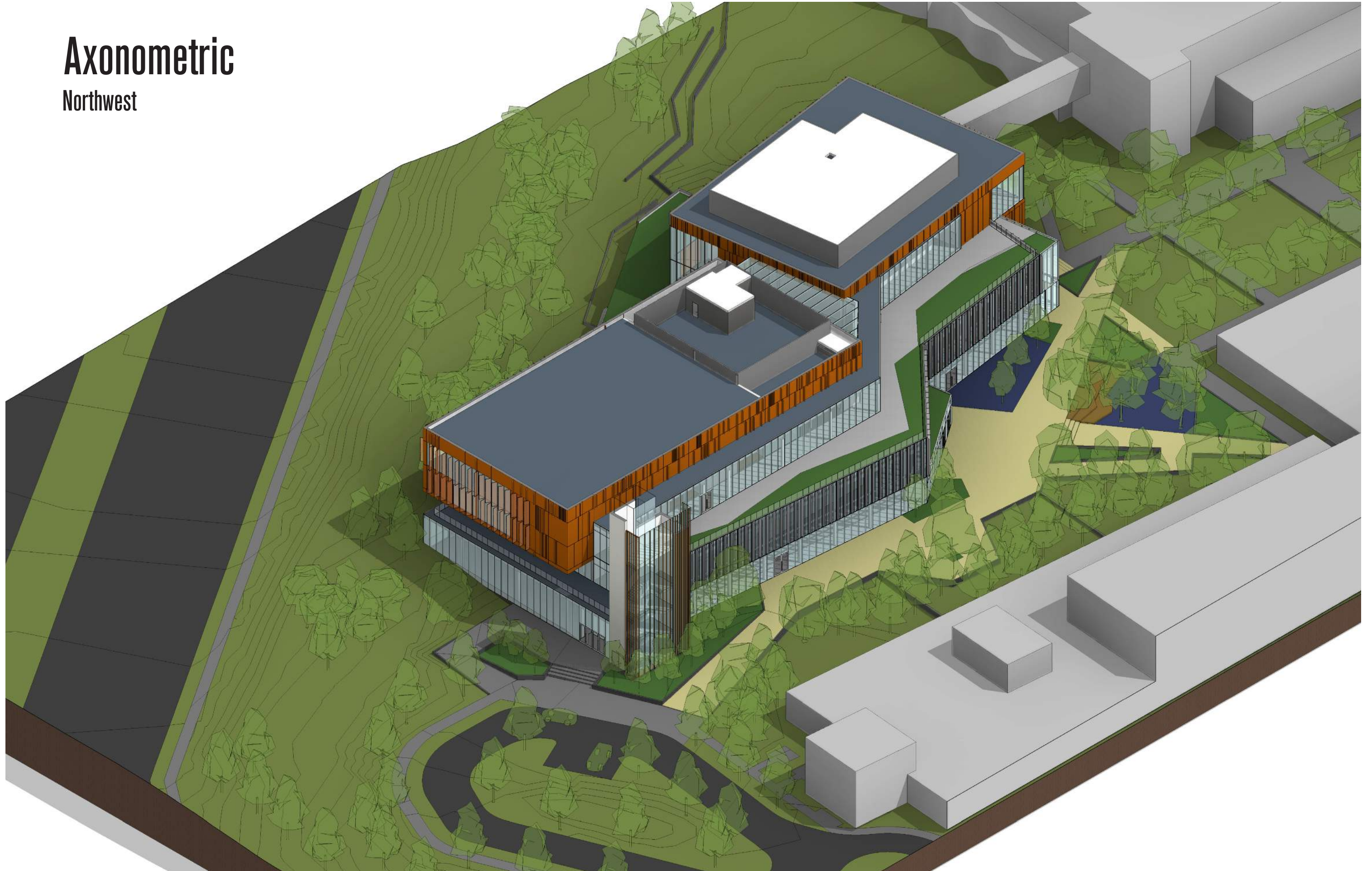
Northwest



Northeast

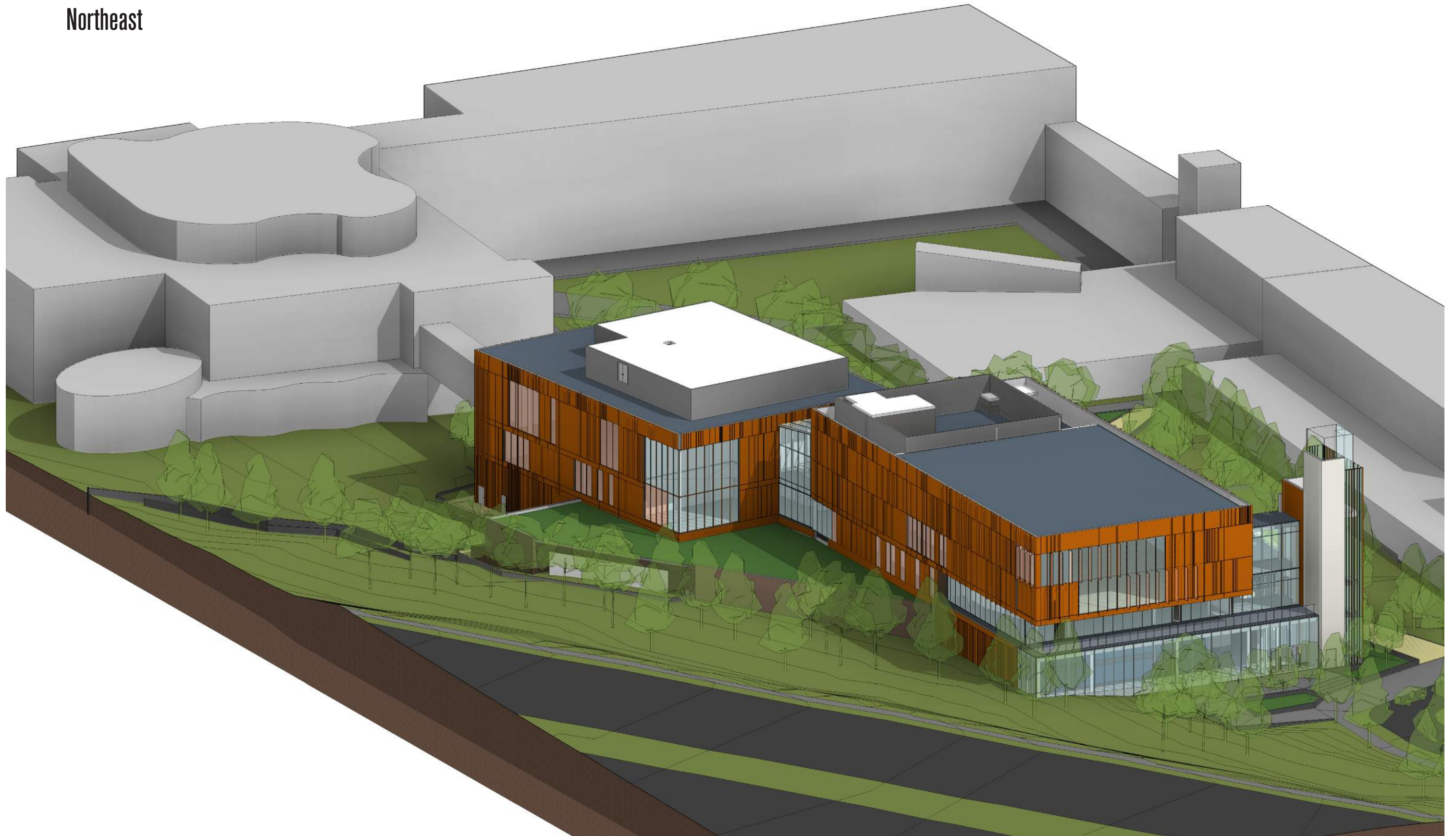
Axonometric

Northwest



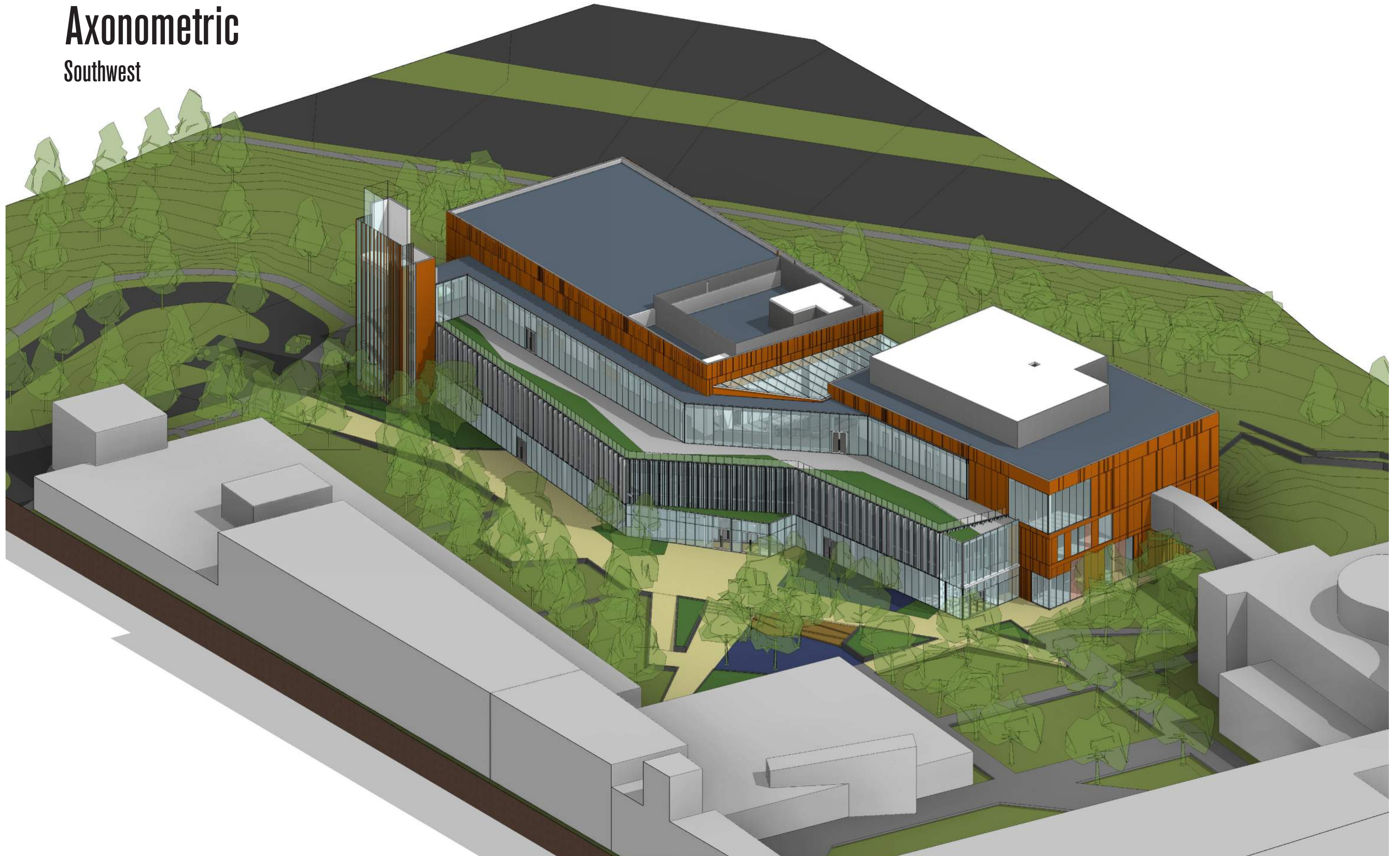
Axonometric

Northeast



Axonometric

Southwest



Perspective

Looking South from Campus Way South



Perspective

Looking Southeast, The New Campus Gateway



Perspective

Looking West from Route 202



Perspective

Looking East at the Dukes Student Center's new Front Door



hord | coplan | macht

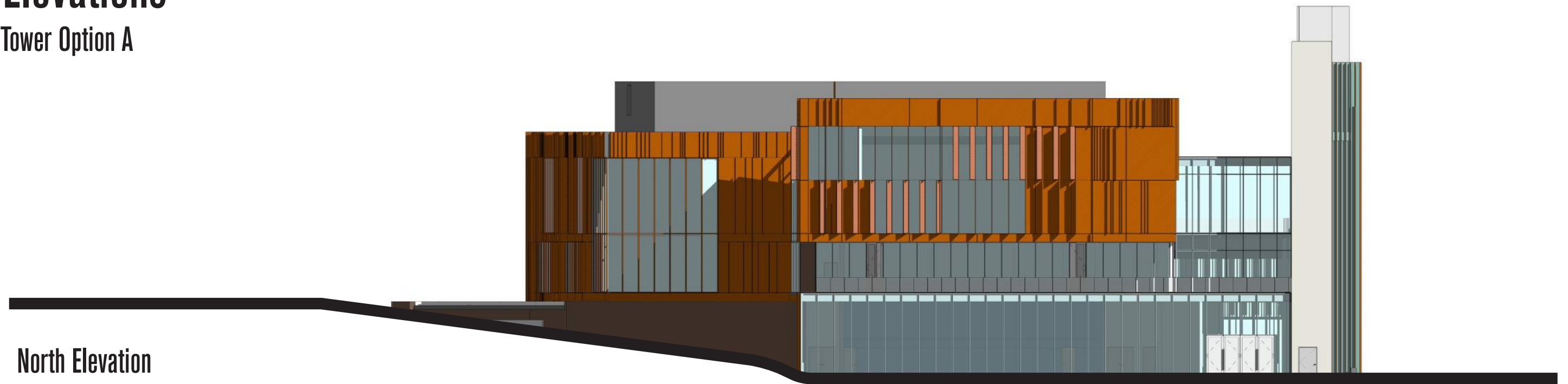
Perspective

Looking North at the Dukes Student Center's southern entry

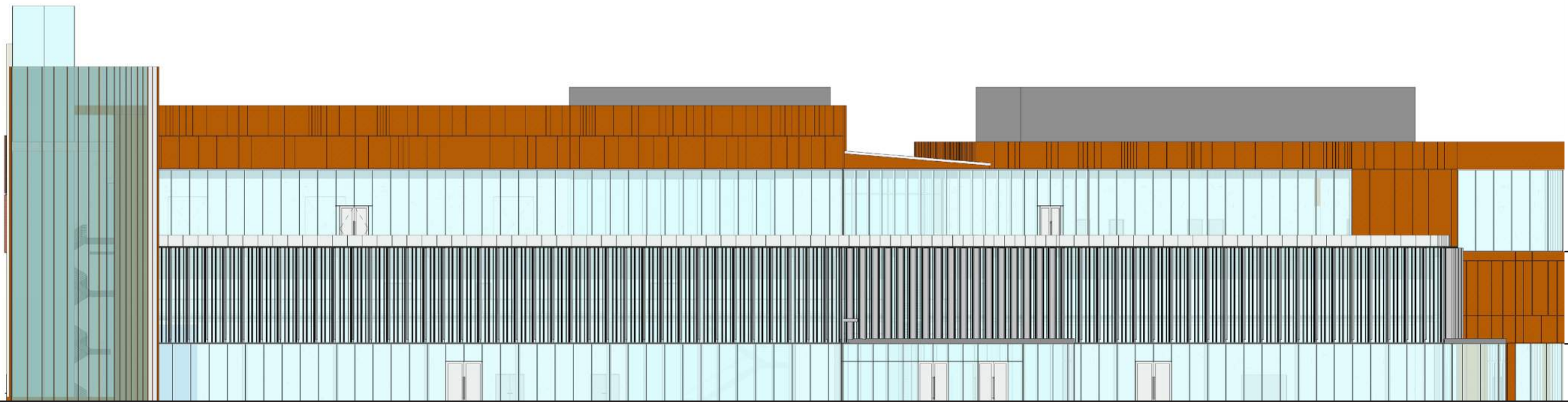


Elevations

Tower Option A



North Elevation



West Elevation

Elevations

Tower Option A



South Elevation



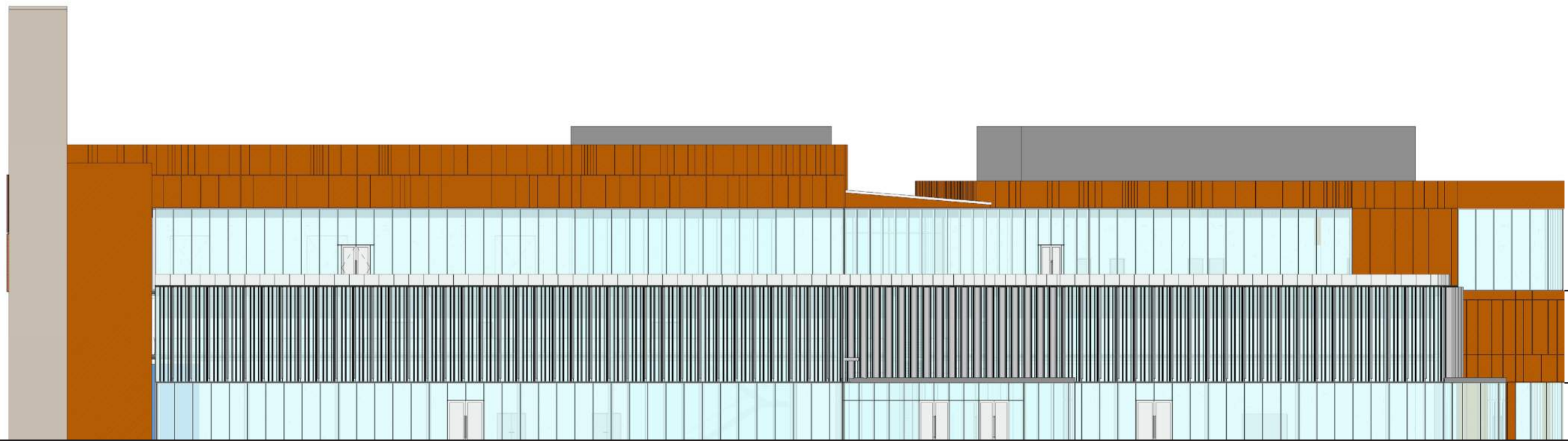
East Elevation

Elevations

Tower Option B



North Elevation



West Elevation

Elevations

Tower Option B



South Elevation



East Elevation

Perspectives

Tower Option A



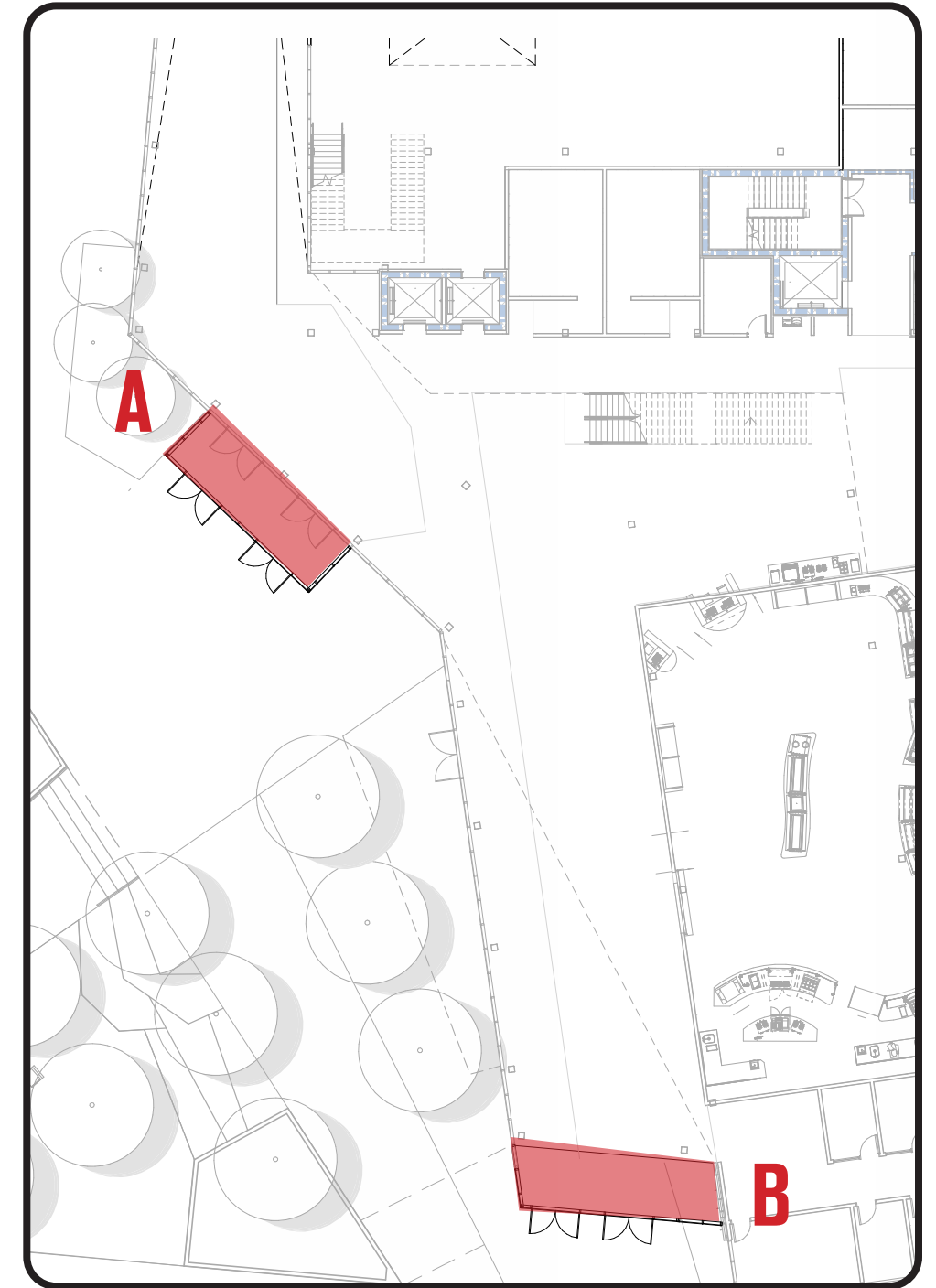
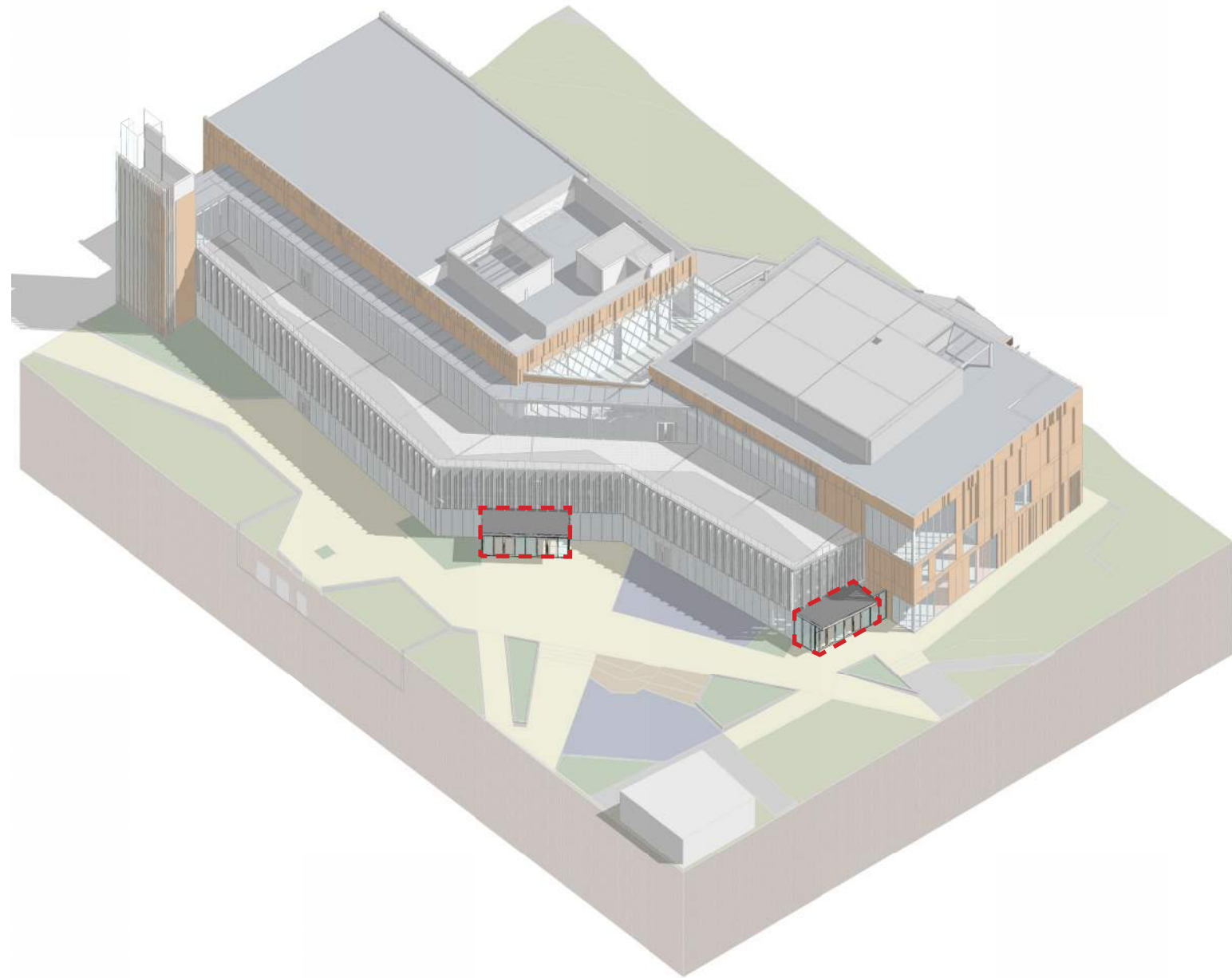
Perspectives

Tower Option B



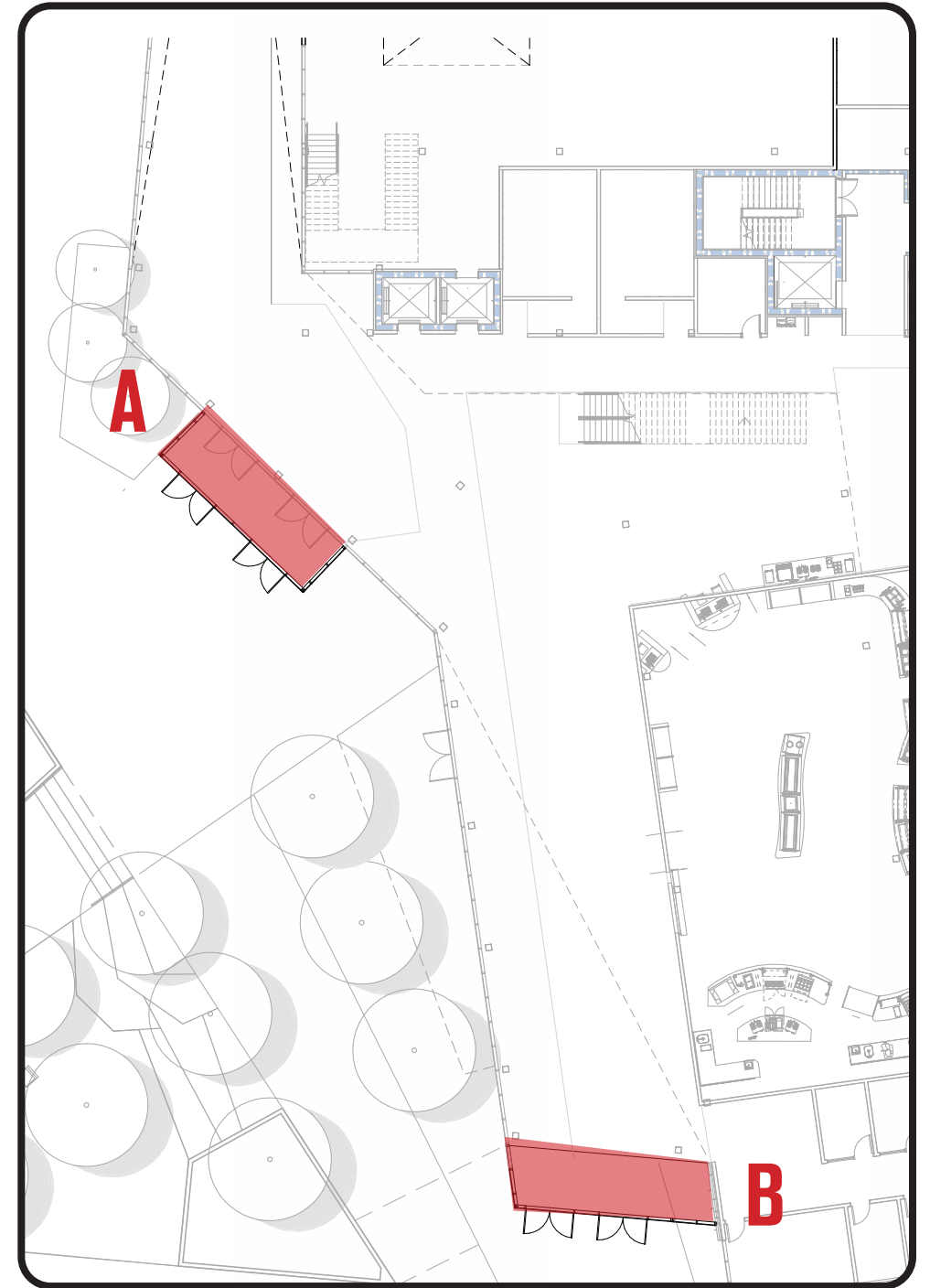
Vestibule Study

Original Concept



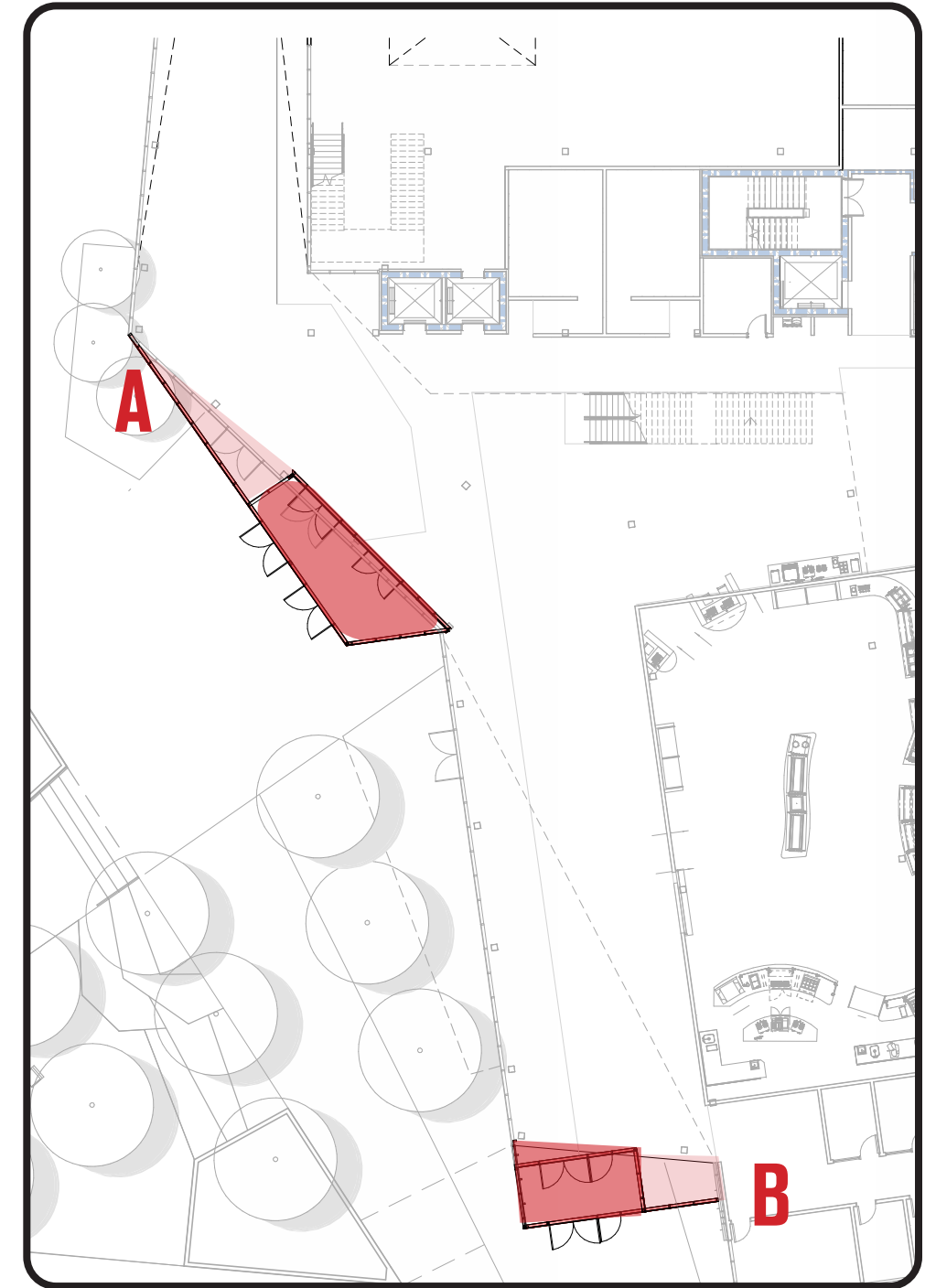
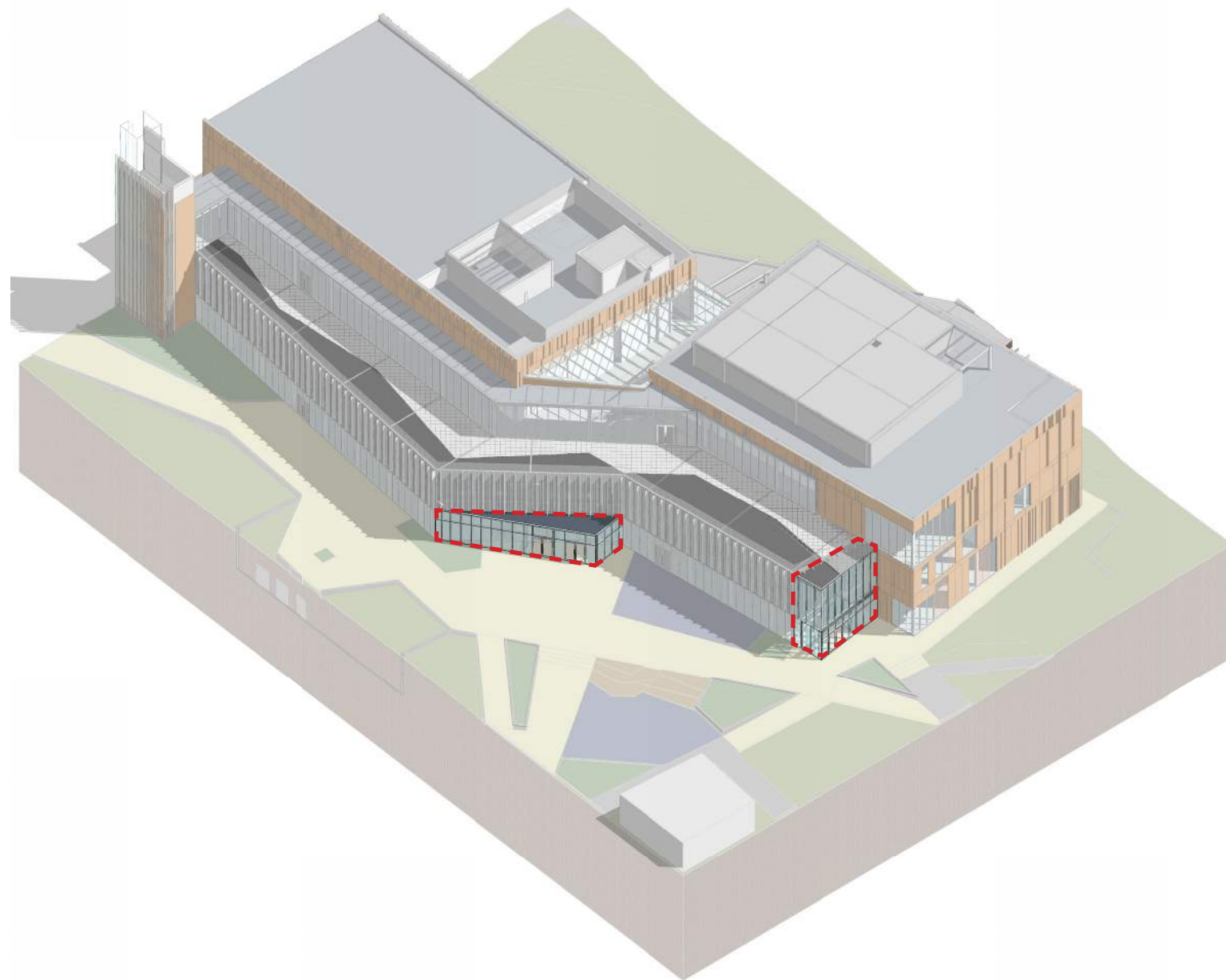
Vestibule Study

Original Concept



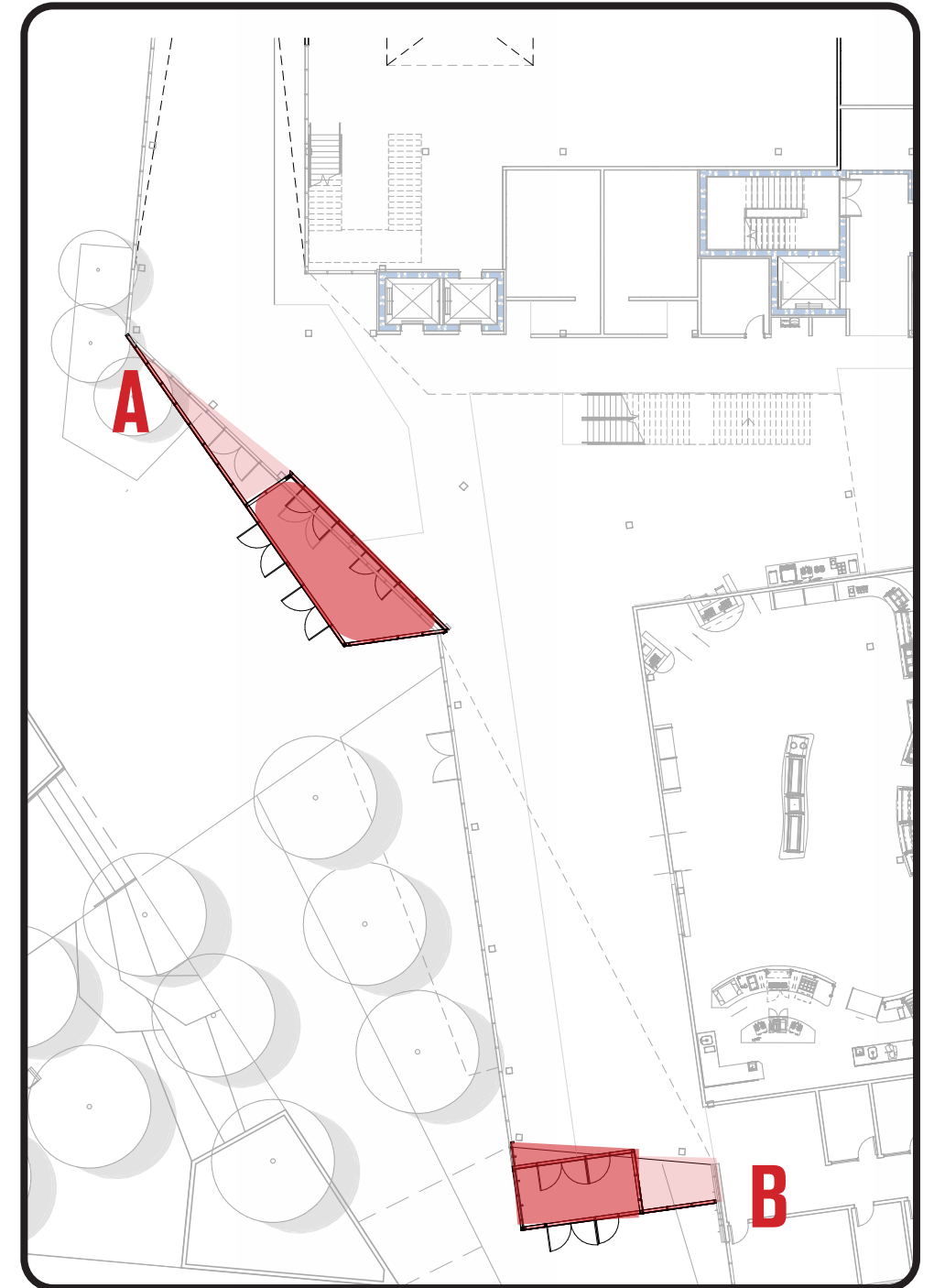
Vestibule Study

Concept A



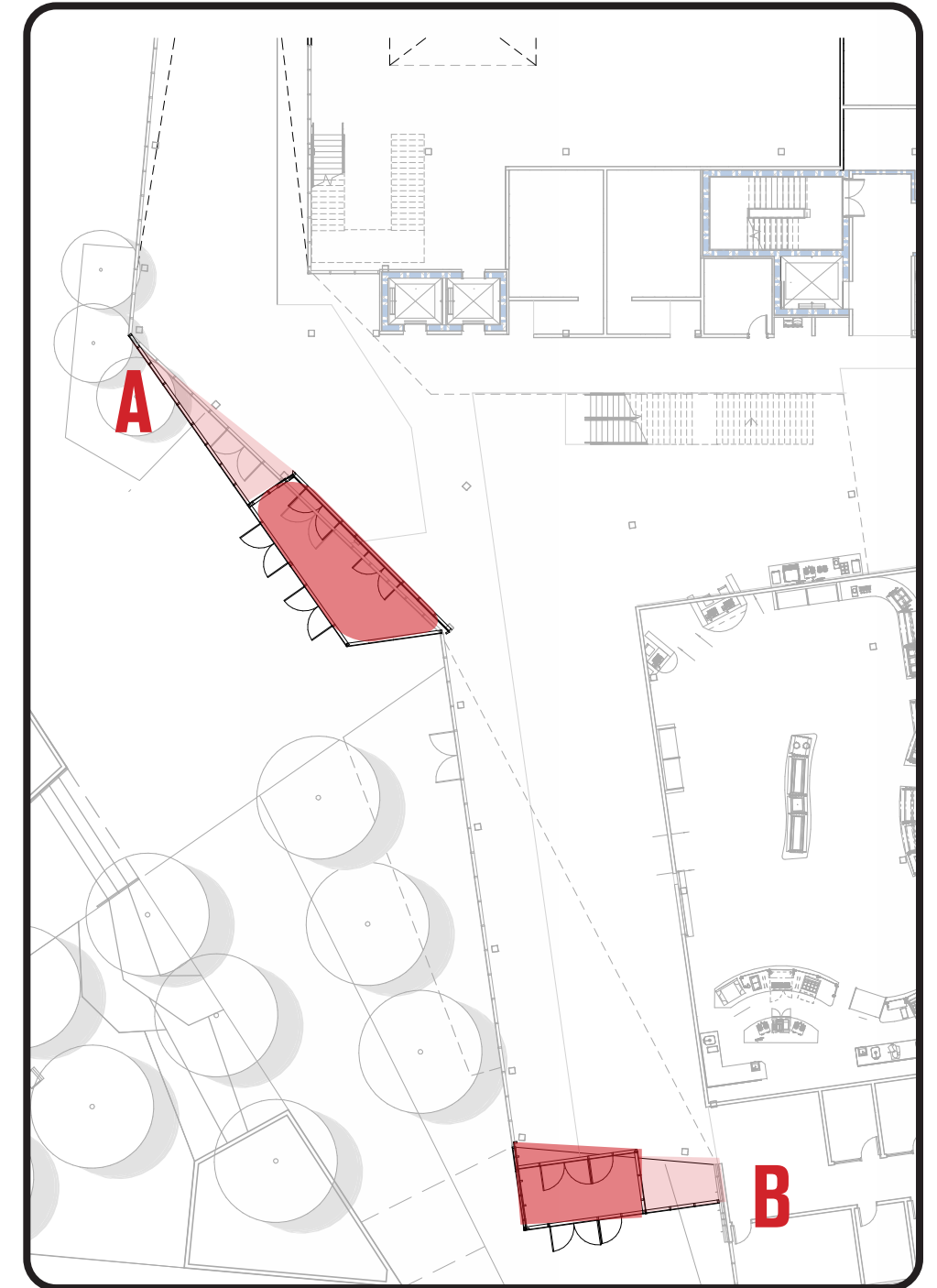
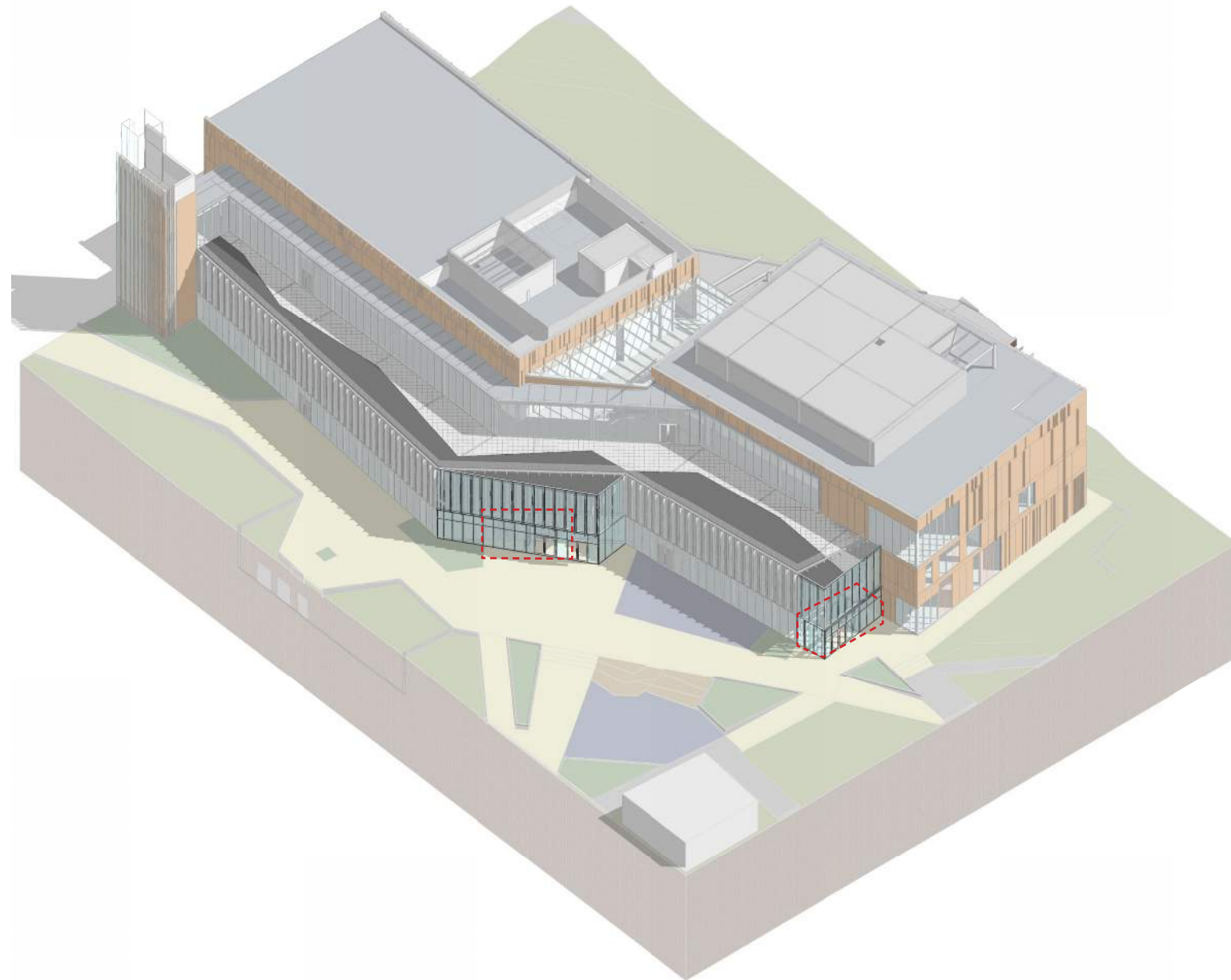
Vestibule Study

Concept A



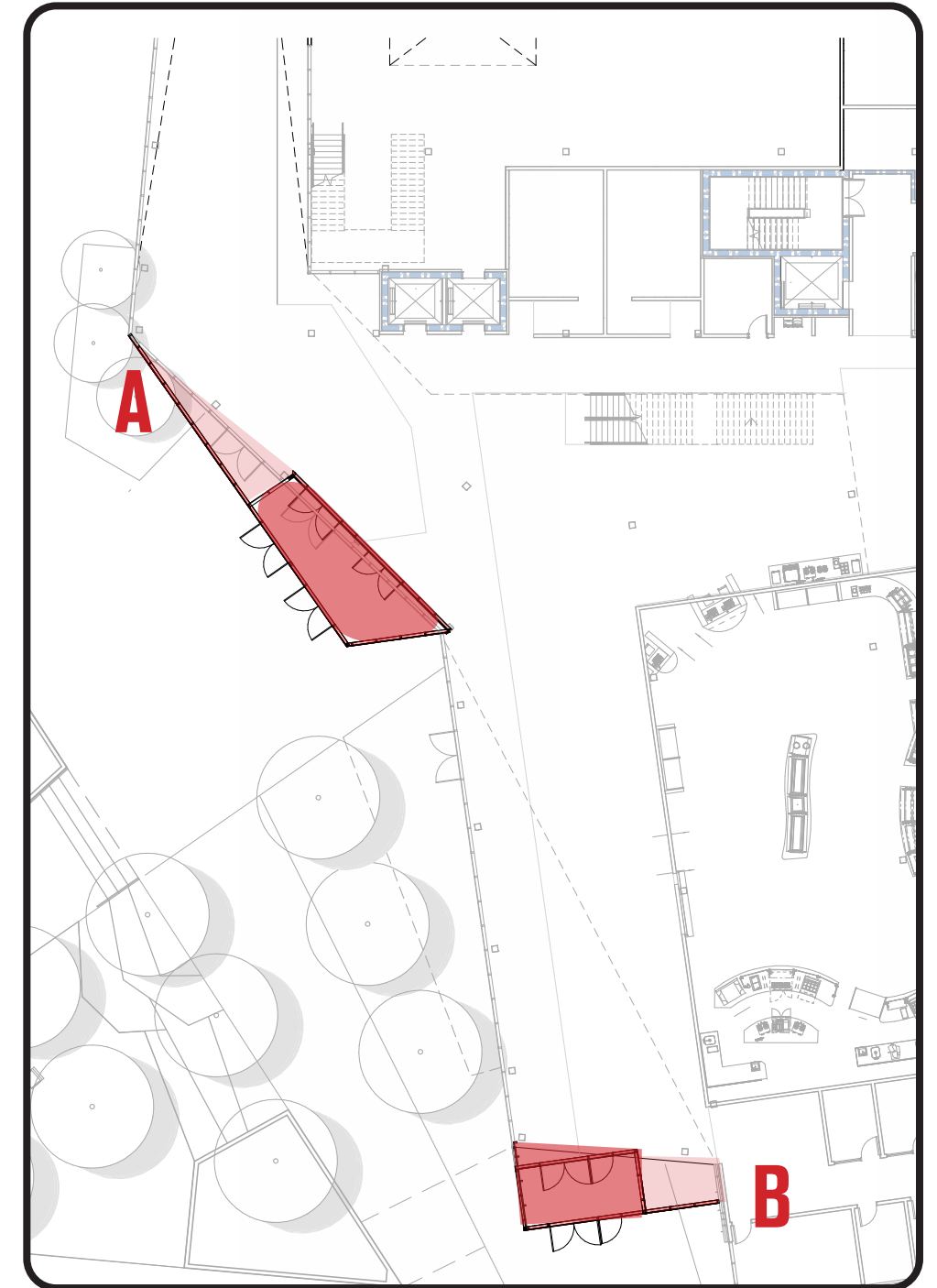
Vestibule Study

Concept B



Vestibule Study

Concept B



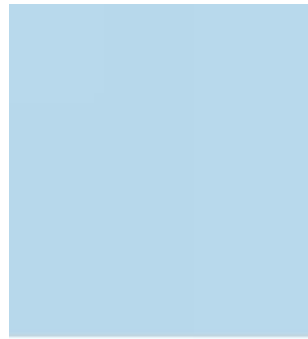
Look & Feel

Colors

Primary Colors



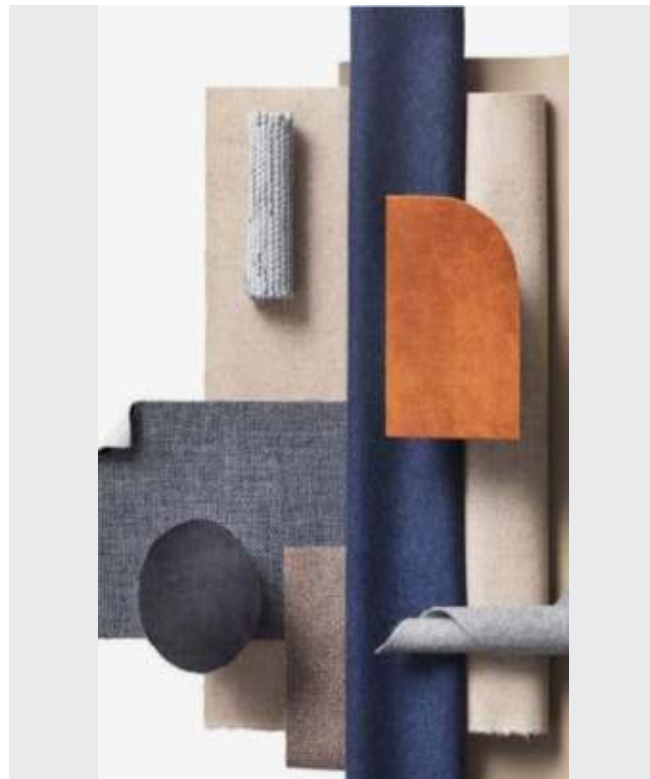
PANTONE®
288 C



PANTONE®
290 C



PANTONE®
542 C



Secondary Colors



PANTONE®
11-0617 TCX



PANTONE®
12-0312 TCX



PANTONE®
12-0717 TPX



PANTONE®
13-0443 TCX



PANTONE®
13-0532 TCX



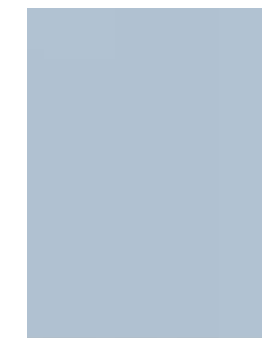
PANTONE®
13-3802 TCX



PANTONE®
14-3911 TCX



PANTONE®
14-4102 TPX



PANTONE®
14-4215 TCX



PANTONE®
15-1216 TPX



PANTONE®
15-3919 TCX



PANTONE®
20-0087 TPM

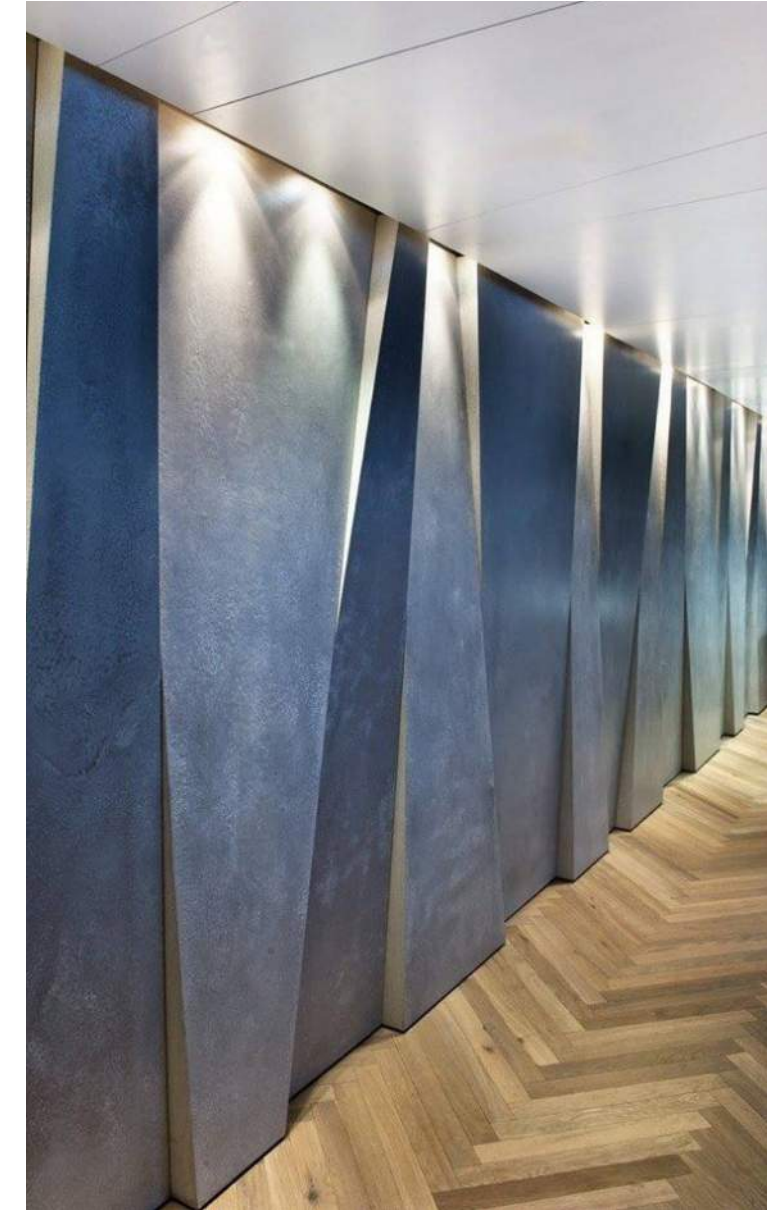
Look & Feel

Rennie Forum



Look & Feel

Prefunction Spaces



Look & Feel

Classrooms & Offices



Look & Feel

Banquet Hall



Look & Feel

Executive Suite & Conference Rms





02. PROGRAM

DEPARTMENT

 CAMPUS LIFE/STUDY	 FACILITIES & AUX SERVICES
 INSTRUCTIONAL	 BOOKSTORE & RETAIL
 STUDENT SUCCESS	 ACADEMIC SYMPOSIUM
 STUDENT AFFAIRS	 SUPPORT

Program Area	PROPOSED PROGRAM					SCHEMATIC DESIGN PROGRAM					HEGIS Designation	DBM Appeal NASF	Variance Proposed Program to	Floor Level	# Occup/ Area
	Qty. of Spaces	NSF/ Space	Total NSF	Mult.	NASF	Qty. of Spaces	NSF/ Space	Total NSF	Mult.	NASF					
Facilities / Auxiliary Services															
Shared Spaces															
ATM	2	40	80	1.3	104	3	16	48	1.3	62	660		60%		
Vending	3	60	180	1.3	234	3	40	120	1.3	156	660		67%		
Subtotal Shared Spaces			260		338			168		218			65%		
Environmental Service (ES) (to be located on 3rd floor)															
ES Supervisors II	1	80	80	1.3	104	1	91	91	1.3	118	310			3	1
ES Supervisors I	1	80	80	1.3	104	1	95	95	1.3	124	310			3	1
sy (What does this mean?)	11	50	550	1.3	715	12	63	750	1.3	975	310			3	12
Conference Room	0	250	0	1.3	0					0	315			3	14
ES Locker Room	1	80	80	1.0	80	1	94	94	1.0	94	315			3	10
ES Equipment Storage	1	300	300	1.0	300	1	327	327	1.0	327	315			3	0
ES Product Supply Room	1	150	150	1.3	195	1	157	157	1.3	204	315			3	0
ES Kitchenette/Breakroom	0	200	0	1.0	0					0	315			3	8
Subtotal ES Spaces			1,240		1,498			1,514		1,842			123%		
Aux Services Event Management Offices															
Student Worker/Intern Office	0	80	0	1.3	0					0	310			3	3
Director Aux Services/Events Office	1	180	180	1.3	234	1	180	180	1.3	234	310			3	1
Manager Events Scheduling/Operations	0	120	0	1.3	0					0	310			3	1
Coordinator, Events Scheduling/Operati	3	120	360	1.3	468	3	120	360	1.3	468	310			3	2
Activities Program Assistant Office (del	0	120	0	1.3	0					0					1
Manager Events Office	1	120	120	1.3	156	1	120	120	1.3	156	310			3	1
Event Support Team	1	130	130	1.3	169	1	161	161	1.3	209	310			3	10
Open Area / Receptionist/Welcome Are	1	350	350	1.0	350	1	341	341	1.0	341	310			3	15 to 20
Mail / Copier / Fax / Office Supplies Stor	1	120	120	1.3	156	1	93	93	1.3	121	315			3	3
Conference Room	0	250	0	1.3	0					0	350			3	15-20
Kitchenette / breakroom	0	250	0	1.3	0					0	315			3	3

Program Area	PROPOSED PROGRAM					SCHEMATIC DESIGN PROGRAM					HEGIS Designation	DBM Appeal NASF	Variance Proposed Program to	Floor Level	# Occup/ Area
	Qty. of Spaces	NSF/ Space	Total NSF	Mult.	NASF	Qty. of Spaces	NSF/ Space	Total NSF	Mult.	NASF					
Subtotal Aux Serv Spaces			1,260		1,533			1,255		1,529			100%		
Department of Public Safety Substation															
Offices / Backup Emergency Communication Site	4	80	320	1.3	416	4	101	404	1.3	525	310		126%	1	4
Reception Desk	1	100	100	1.3	130	1	96	96	1.3	125	310		96%	1	2
Entry lobby area	1	200	200	1.3	260	1	219	219	1.3	285	315		110%	1	6
Interview / Public Meeting Room	1	175	175	1.3	228	1	256	256	1.3	333	350		146%	1	6
Private Conference Room / Satellite	1	350	350	1.0	350	1	397	397	1.0	397	350		113%	1	20
Roll Call/Training/ Emergency Management															
Breakroom/Kitchenette	1	150	150	1.3	195	1	247	247	1.3	321	315		165%	1	0
Private Unisex shared Toilet Room	1	70	70	1.3	91	1	108	108	1.3	140	315		154%	1	0
Storage - bike lockers	1	100	100	1.3	130	1	219	219	1.3	285	315		219%	1	0
Subtotal DPS			1,465		1,800			1,946		2,411			134%		
Classroom Event Technology (CET) (to be located on 3rd floor adjacent to Aux Services)															
Offices	1	100	100	1.3	130	1	101	101	1.3		310			3	0
Storage	1	150	150	1.3	195	1	146	146	1.3		315			3	0
Subtotal CET			250		325			247		326			100%		
Aux Services Space Total			4,475		5,494			5,130		6,326			115%		

Program Area	PROPOSED PROGRAM					SCHEMATIC DESIGN PROGRAM					HEGIS Designation	DBM Appeal NASF	Variance Proposed Program to	Floor Level	# Occup/ Area
	Qty. of Spaces	NSF/ Space	Total NSF	Mult.	NASF	Qty. of Spaces	NSF/ Space	Total NSF	Mult.	NASF					
Food Service / Dining															
Offices															
Staff Lounge/Training Room	0	800	0	1.0	0						630				30
Food services Offices	3	100	300	1.3	390	2	73	146	1.3	190	635		49%		1
Food Service Locker / Toilet	1	80	80	1.3	104	1	153	153	1.3	199	635		191%		6?
Cash Room	1	120	120	1.3	156	0	0	0		0	635		0%		1
FS Break Room	0	200	0	1.3	0						635				10
Subtotal Offices			500		650			299		389			60%		
Dining															
Seating	355	18	6,390	1.0	6,390	1	6,864	6864	1.0	6,864	650		107%		250
Subtotal Dining			6,390		6,390			6,864		6,864			107%		
Servery															
Servery	1	4,266	4,266	1.0	4,266	1	4,118	4118	1.0	4,118	635		97%	1	0
Prep/Kitchen	1	3,194	3,194	1.0	3,194	1	3,425	3425	1.0	3,425	635		107%	1	0
Warewash	0	450	0	1.0	0						635			1	0
Dry Storage	0	0	0	1.0	0						635			1	0
Dry Storage	0	0	0	1.0	0						635			1	0
Walk-In Cooler/Freezer	0	0	0	1.0	0						635			1	0
Catering Warming Kitchen	1	450	450	1.0	450	1	808	808	1.0	808	635		180%	3	0
Catering Storage	1	250	250	1.0	250	2	65	130	1.0	130	635		52%	3	0
Catering Plating Room	1	250	250	1.0	250	0	0	0	0.0	0	635		0%	3	0
Food Services Custodial Closet	2	80	160	1.3	208	1	49	49	1.3	64	635		31%	1 & 3	0
Subtotal Servery			8,410		8,618			8,530		8,545			99%		
Retail															
Branded Concept	0	1,500	0	1.0	0					0					10
Vending	0	60	0	1.3	0					0					0
Coffee Shop	0	0	0	1.0	0					0					0
Subtotal Retail			0		0			0		0					
Food Service / Dining Total			15,300		15,658			15,693		15,797			101%		

Program Area	PROPOSED PROGRAM					SCHEMATIC DESIGN PROGRAM					HEGIS Designation	DBM Appeal NASF	Variance Proposed Program to	Floor Level	# Occup/ Area
	Qty. of Spaces	NSF/ Space	Total NSF	Mult.	NASF	Qty. of Spaces	NSF/ Space	Total NSF	Mult.	NASF					
Student Affairs / Student Organizations															
Student Affairs (VP Suite to be located at exterior wall with windows to the outside with access to 2nd floor conference room)															
VP/SA Office	1	225	225	1.3	293						310				1
AVP SA Office	1	215	215	1.3	280						310				1
VP / AVP Executive Assistants	2	110	220	1.3	286						310				1
Conference Room	0	200	0	1.3	0						350				12
Reception / Waiting Area	1	240	240	1.3	312						315				4 Max
Storage	0	100	0	1.3	0						315				
Subtotal Student Affairs Suite			900		1,170										
Student Clubs and Organizations Suite (Space to be mostly open and flexible)															
Clubs/Orgs shared suite	0	0	0	1.0	0										
Computer stations/Collaboration area	12	20	240	1.3	312	12	452	452	1.3	588	310				12
Clubs/Orgs Lounge/Open study area	1	300	300	1.0	300	0	0	0			410				20
General Club Storage	1	200	200	1.3	260	1	131	131	1.3	170	315				1
Meeting Room	1	250	250	1.0	250	1	159	159	1.0	159	350				12
Prayer/Meditation Room	2	150	300	1.3	390	2	80	160	1.3	208	610				2 to 4
Prayer/Meditation Wash Room	2	80	160	1.3	208	1	80	80	1.3	104	615				
Study Rooms - Private	2	50	100	1.3	130	1	89	89	1.3	116	315				
Resource Room	1	100	100	1.3	130	1	89	89	1.3	116	315				1
Multi-Purposed Activity Room	0	1,200	0	1.0	0										50
Subtotal Shared Spaces			1,650		1,980			1,160		1,460			74%		
Student Government Association (SGA)															
President / VP offices	2	80	160	1.3	208	2	105	210	1.3	273	310				1
Office/Work Area	1	200	200	1.0	200	1	225	225	1.0	225	310				6
Storage	1	100	100	1.3	130	1	68	68	1.3	88	315				0
Subtotal SGA			460		538			503		586			109%		

Program Area	PROPOSED PROGRAM					SCHEMATIC DESIGN PROGRAM					HEGIS Designation	DBM Appeal NASF	Variance Proposed Program to	Floor Level	# Occup/ Area
	Qty. of Spaces	NSF/ Space	Total NSF	Mult.	NASF	Qty. of Spaces	NSF/ Space	Total NSF	Mult.	NASF					
Campus Activities Board (CAB)															
Office	1	150	150	1.3	195	0	0	0		0	310				4
Storage	1	100	100	1.3	130	0	0	0		0	315				0
Subtotal CAB			250		325			0		0			0%		
Student Publication (Owl Newspaper + Magazine + Podcasts)															
Advisor Offices	2	80	160	1.3	208	2	104	208	1.3	270	310				1
Computer Stations (Mac & PC)	8	30	240	1.3	312	8	33	262	1.3	341	310				1
(2) Layout Work Tables for multiple use	1	250	250	1.3	325	1	286	286	1.3	372	310				10
Conference Room	0	200	0	1.3	0						350				10
Podcast Recording Studio Small Sized (1	1	80	80	1.3	104	1	86	86	1.3	112	530				0
Podcast Recording Studio Medium Sized	1	140	140	1.3	182	0	0	0	0.0		530				
Storage	1	100	100	1.3	130	1	36	36	1.3	47	315				0
Subtotal CAB			970		1,261			878		1,141			91%		
SGA / Organizations Total			4,230		5,274			2,541		3,188			60%		

Program Area	PROPOSED PROGRAM					SCHEMATIC DESIGN PROGRAM					HEGIS Designation	DBM Appeal NASF	Variance Proposed Program to	Floor Level	# Occup/ Area
	Qty. of Spaces	NSF/ Space	Total NSF	Mult.	NASF	Qty. of Spaces	NSF/ Space	Total NSF	Mult.	NASF					
PGCC College Store & Retail															
College Store Offices & Support Spaces															
Offices	3	100	300	1.3	390	1	398	398	1.3	517	665		133%		1
PT team members	5	0	0	1.3	0										
Bookstore Storage I - expensive technology cabinets, near cash wrap	0	80	0	1.0	0						665				0
Bookstore Storage II - convenience, books/supplies, merchandise	0	0	0	1.0	0						665				0
Bookstore Stock Rm / Shipping & Receiving	1	780	780	1.0	780	1	581	581	1.0	581	665		74%		0
Break Room with lockers	1	120	120	1.3	156	1	144	144	1.3	187	665		120%		4
Subtotal Bookstore Offices & Support			1,200		1,326			1,123		1,286			97%		
College Store Retail															
Point of Sale Stations	1	375	375	1.0	375						665				5
Spirit/clothing Merchandise	1	1,450	1,450	1.0	1,450						660				
Gifts	1	370	370	1.0	370						660				
Supplies: Art, School/Office, Culinary	1	400	400	1.0	400						660				
Textbooks and Book Buy Back Desk	1	2,000	2,000	1.0	2,000						660				
Convenience Store (Additional Retail/Service)	1	510	510	1.0	510						660				
Technology Sales	1	770	770	1.0	770						660				
Subtotal College Store Retail			5,875		5,875			4,424		4,424			75%		
Genius Bar															
	1	0	0	1.0	0										
Subtotal Genius Bar			0		0										
GCC College Store/Retail Total			7,075		7,201			5,547		5,710			79%		

PROPOSED PROGRAM

SCHEMATIC DESIGN PROGRAM

Program Area	PROPOSED PROGRAM					SCHEMATIC DESIGN PROGRAM					HEGIS Designation	DBM Appeal NASF	Variance Proposed Program to	Floor Level	# Occup/ Area
	Qty. of Spaces	NSF/ Space	Total NSF	Mult.	NASF	Qty. of Spaces	NSF/ Space	Total NSF	Mult.	NASF					
Student Success / Services															
Wellness & Mental Health Services															
Program Director	1	180	180	1.3	234	1	216	216	1.3	281	310				1
Front Office Reception	1	100	100	1.3	130	1	260	260	1.3	338	310				2
Counselor	3	150	450	1.3	585	3	130	390	1.3	507	310				2 or 3
Student Employees	2	60	120	1.3	156	2	45	90	1.3	117	310				1
Exam Rooms	0	0	0	1.3	0						540				
Violence Prevention Center (VPC) Coord	1	100	100	1.3	130	1	120	120	1.3	156	310				1
VPC Community Resource Office	1	100	100	1.3	130	1	123	123	1.3	160	310				1
VPC: Community Resource Office: Health	1	100	100	1.3	130	1	125	125	1.3	163	310				1
Conference Room	0	250	0	1.0	0						545				15?
Copy/Supply Room	1	100	100	1.3	130	1	139	139	1.3	181	315				2
Lactation (Nursing) Room	1	120	120	1.3	156	1	109	109	1.3	142	350				1
Family Restroom	0	80	0	1.3	0						350				
Clinic Restrooms	0	80	0	1.3	0						350				
Subtotal Wellness			1,370		1,781			1,572		2,044			115%		
PGCC Cares															
Offices	0	120	0	1.3	0						310				
Conference Room	0	275	0	1.3	0						350				
Storage	1	150	150	1.3	195	1	150	150	1.3	195	665		100%		
Owl Market - Retail Floor area (food pantry/clothing)	1	800	800	1.0	800	1	897	897	1.0	897	665		112%		TBD
Subtotal PGCC Cares			950		995			1,047		1,092			110%		
Student Success & Engagement (SE+E)															
Program Director Student Engagement + Leadership (SEL) - private office	1	130	130	1.3	169	1	134	134	1.3	174	310				1
Administrative Associate SS+E - private office	1	100	100	1.3	130	1	126	126	1.3	164	310				1
Program Director Student Life Office	0	0	0	1.3	0										
Manager, SEL Office - private office	1	100	100	1.3	130	1	121	126	1.3	164	310				1
Graphic Designer - private office	1	100	100	1.3	130	1	117	117	1.3	152	310				1
PT Staff Office -projected FT	4	80	320	1.3	416	4	80	320	1.3	416	310				4

Program Area	PROPOSED PROGRAM					SCHEMATIC DESIGN PROGRAM					HEGIS Designation	DBM Appeal NASF	Variance Proposed Program to	Floor Level	# Occup/ Area
	Qty. of Spaces	NSF/ Space	Total NSF	Mult.	NASF	Qty. of Spaces	NSF/ Space	Total NSF	Mult.	NASF					
Student Worker/Intern Office	2	80	160	1.3	208	2	80	160	1.3	208	310				3
Receptionist / Waiting Area	1	250	250	1.3	325	1	411	411	1.3	534	310				4
Workroom	1	150	150	1.3	195	1	114	114	1.3	148	315				
Conference Room	0	250	0	1.3	0						350				12
Food Pantry	0	100	0		0										
Coat Closet	0	50	0		0										
Lost/Found Storage	1	50	50	1.3	65	0	0	0			315				
Kitchenette/Breakroom	0	200	0	1.3	0						315				4
Storage	2	125	250	1.0	250	1	100	100	1.0	100	315				
Subtotal SE+E			1,710		2,148			1,723		2,210			103%		
Student Success / Services Total			3,080		4,924			4,342		5,346			109%		

Program Area	PROPOSED PROGRAM					SCHEMATIC DESIGN PROGRAM					HEGIS Designation	DBM Appeal NASF	Variance Proposed Program to	Floor Level	# Occup/ Area
	Qty. of Spaces	NSF/ Space	Total NSF	Mult.	NASF	Qty. of Spaces	NSF/ Space	Total NSF	Mult.	NASF					
Academic Symposium Spaces + Lecture Performance Space (Conference / Meeting Rooms / Board Room Suite)															
Meeting Rooms															
Board of Trustees / Conference Meeting	1	1,750	1,750	1.0	1,750	1	1,936	1,936	1.0	1,936	680		111%	3	84
Executive Conference Room	1	300	300	1.0	300	1	351	351	1.0	351	680		117%	3	14
Meeting/Conference Room I	1	350	350	1.0	350	1	648	648	1.0	648	680		185%	3	20
Meeting/Conference Room II	2	850	1,700	1.0	1,700	1	891	891	1.0	891	680		52%	3	50
Conference Room V	0	1,500	0	1.0	0						680				100
Events Storage / Resource Room	1	300	300	1.0	300	1	302	302	1.0	302	685		101%	1 & 3	0
Meeting Room Storage	1	1,200	1,200	1.0	1,200	1	450	450	1.0	450	685		38%	1 & 3	0
Banquet / Large Meeting / Divisible into	1	9,750	9,750	1.0	9,750	1	8,342	8,342	1.0	8,342	680		86%	3	650
Prefunction	1	2,000	2,000	1.0	2,000	1	2,010	2,010	1.0	2,010	680		101%		200?
Breakout Room Storage	0	0	0	1.3	0						615				0
Rennie Forum Lobby (Sound Light Lock)															
Rennie Forum Main Seating	1	2,500	2,500	1.0	2,500	1	2,586	2,586	1.0	2,586	610		103%		230+

Program Area	PROPOSED PROGRAM					SCHEMATIC DESIGN PROGRAM					HEGIS Designation	DBM Appeal NASF	Variance Proposed Program to	Floor Level	# Occup/ Area
	Qty. of Spaces	NSF/ Space	Total NSF	Mult.	NASF	Qty. of Spaces	NSF/ Space	Total NSF	Mult.	NASF					
Rennie Forum Stage Storage	1	300	300	1.0	300	1	250	250	1.0	250	615		83%		
Rennie Forum Piano Storage	1	150	150	1.0	150	1	96	96	1.0	96	615		64%		
BOH Green Room with Toilet	1	250	250	1.0	250	2	289	578	1.0	578	615		231%		
BOH Dressing RM with Toilets	1	150	150	1.0	150	1	341	341	1.0	341	615		227%		
BOH Dressing RM with Toilets	1	150	150	1.0	150	1	342	342	1.0	342	615		228%		
Subtotal Meeting/Conf Rooms			22,100		24,150			22,911		22,911					
Academic Symposium Total			22,100		24,150			22,911		22,911			95%		

Program Area	PROPOSED PROGRAM					SCHEMATIC DESIGN PROGRAM					Variance			Floor Level	# Occup/ Area
	Qty. of Spaces	NSF/ Space	Total NSF	Mult.	NASF	Qty. of Spaces	NSF/ Space	Total NSF	Mult.	NASF	HEGIS Designation	DBM Appeal NASF	Proposed Program to		
Instructional															
Shared Spaces															
Market/Maker Space	1	1,000	1,000	1.0	1,000	1	1,000	1,000	1.0	1,000	110		100%		0
Library Resource Room	2	200	400	1.0	400	1	200	200	1.0	200	410		50%	1/2	10
Classroom -20	1	550	550	1.0	550					0	110		0%		20
Classroom - 30	4	850	3,400	1.0	3,400	3	850	2,550	1.0	2,550	110		75%		30
Classroom - 50	1	1,500	1,500	1.0	1,500					0	110		0%		50
Subtotal Instructional			6,850		6,850			3,750		3,750					
Instructional Total			6,850		6,850			3,750		3,750			55%		

Program Area	PROPOSED PROGRAM					SCHEMATIC DESIGN PROGRAM					HEGIS Designation	DBM Appeal NASF	Variance Proposed Program to	Floor Level	# Occup/ Area
	Qty. of Spaces	NSF/ Space	Total NSF	Mult.	NASF	Qty. of Spaces	NSF/ Space	Total NSF	Mult.	NASF					
Campus Life/ Study and Lounge Space															
Lounge/Study Spaces															
African American Studies Institute (AASI)															
Gallery	0	1,600	0	1.0	0						620				
Directors Office	0	150	0	1.0	0						310				
Reception	0	100	0	1.0	0						310				
Storage	0	50	0	1.0	0						315				
Study/Lounge Space - 1st Floor	0	1,250	0	1.0	0						410			1	75
Small Group Collaboration Rooms	3	100	300	1.3	390				0		410	0%		2	4
Medium Group Collaboration Rooms	3	150	450	1.3	585	1	552	552	1.0	552	410	94%			6
Study Lounge Space- 2nd Floor	2	1,100	2,200	1.0	2,200	1	2,217	2,217	1.0	2,217	410	101%		2	75
Small Group Collaboration Rooms	2	100	200	1.3	260					0	410	0%		2	4
Medium Group Collaboration Rooms	2	150	300	1.3	390	1	431	431	1.0	431	410	111%		2	6
Multi-Purpose/Game Room/Esports	1	1,000	1,000	1.0	1,000					0	410	0%		2	50
Subtotal Lounge / Study Spaces			4,450		4,825			3,200		3,200		66%			
Ticket Sales															
Ticket/Transaction Windows	0	0	0	1.3	0										2
Ticket Cash Room	0	0	0	1.3	0										0
Ticket Office	0	0	0	1.3	0	1	60	60	1.3	78					0
Subtotal Ticket Sales			0		0			60		60					
Campus Life Total			4,450		4,825			3,260		3,278		68%			

Program Area	PROPOSED PROGRAM					SCHEMATIC DESIGN PROGRAM					HEGIS Designation	DBM Appeal NASF	Variance Proposed Program to	Floor Level	# Occup/ Area
	Qty. of Spaces	NSF/ Space	Total NSF	Mult.	NASF	Qty. of Spaces	NSF/ Space	Total NSF	Mult.	NASF					
Support / Shared Amenity Spaces															
Mechanical Room	0	0	0	0.0	0										
Maintenance Storage	0	500	0	1.0	0										
Water Entry Room, Fire Pump	0	0	0	0.0	0	1	480	480	1.0	480					
Main Electrical Room	0	0	0	0.0	0	1	730	730	0.0	730					
Electrical Closets						4	25	100	1.0	100					
Public Toilet Rooms	0	0	0	0.0	0	6	1,679	1,679	0.0	1,679					
Admin Staff Kitchenette / Breakroom	2	300	600	1.0	600	1	177	177	1.0	177	315		30%		15
Administrative Conference Rooms	1	350	350	1.0	350					0	350		0%		15 to 20
Administrative Conference Rooms	2	200	400	1.0	400	1	441	441	1.0	441	350		110%		8 to 12
Admin Staff Toilet Rooms	0	80	0	1.3	0										
Loading Dock, Cart Wash	0	1,000	0	1.0	0	1	819	819		819					
Trash Room						1	320	320		320					
Student Lockers	0	60	0	1.3	0										
Gender Neutral Toilet Rooms (2 per floor)	0	80	0	1.3	0	4	108	432		432					
Additional Storage	0	200	0	1.3	0										
IT Rooms (MDF + Multiple IDF Rooms on upper floors)	0	80	0	1.3	0	3	170	510		510					
Freight Elevator	0	70	0	1.3	0										
Exterior Building Storage	0	220	0	1.0	0										
Building Storage	1	500	500	1.0	500					286	730		57%		
Support Spaces Total			1,850		1,850			5,688		5,974					

Program Area	PROPOSED PROGRAM					SCHEMATIC DESIGN PROGRAM					HEGIS Designation	DBM Appeal NASF	Variance Proposed Program to	Floor Level	# Occup/ Area
	Qty. of Spaces	NSF/ Space	Total NSF	Mult.	NASF	Qty. of Spaces	NSF/ Space	Total NSF	Mult.	NASF					
Summary of Program Spaces			Total NSF		NASF			Total NSF		NASF					
Facilities / Auxiliary Services			4,475		5,494			5,130		6,326					
Food Service / Dining			15,300		15,658			15,693		15,797					
Student Government / Organizations			4,230		5,274			2,541		3,188					
PGCC College Store / Retail			7,075		7,201			5,547		5,710					
Student Success / Student Services			3,080		4,924			4,342		5,346					
Academic Symposium (Conference / Meeting Rooms)			22,100		24,150			22,911		22,911					
Instructional			6,850		6,850			3,750		3,750					
Campus Life / Study and Lounge Spaces			4,450		4,825			3,260		3,278					
Service / Support Spaces			1,850		1,850			5,688		5,974					
Total Net Assignable Square Feet					76,226					72,280					
Available SF from 65% Grossing Factor					26,679					25,298					
TOTAL GROSS SQ FT - 65% Efficiency					102,904					97,578					

EXISTING

LEVEL 1: 35,606 SF

LEVEL 2: 33,500 SF

TOTAL: 69,100 GSF

NEW

LEVEL 1: 48,494 SF

LEVEL 2: 26,736 SF

LEVEL 3: 30,646SF

TOTAL: 105,876 GSF

hord | coplan | macht

MOYA
DESIGN PARTNERS